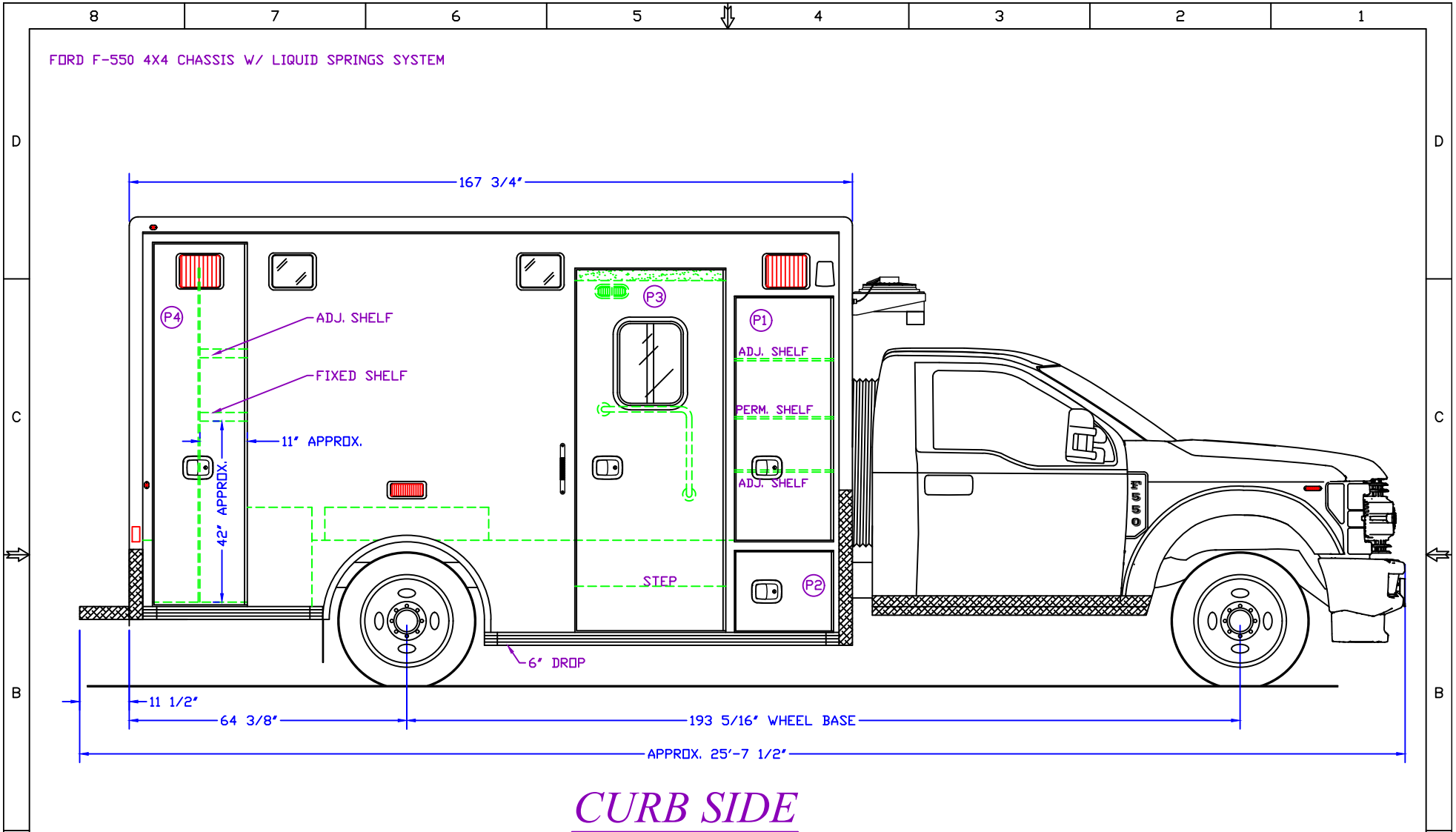


FORD F-550 4X4 CHASSIS W/ LIQUID SPRINGS SYSTEM



**CURB SIDE**

COMPT.	INTERIOR HEIGHT	PASS-THRU HEIGHT	INTERIOR WIDTH	PASS-THRU WIDTHS	DEPTH	DESCRIPTION
P1	56"	55"	23 3/4"	18"	26"	IS/OS STORAGE
P2	18"	17"	22 1/2"	21"	19 1/4"	BATTERY TRAY
P3	72 1/4"	82 1/2"	34 1/2"	30"	---	SIDE ENTRY DOOR
P4	82 1/2"	82 1/2"	*21 1/2"	17"	20 7/8"	BACK BOARD - IS/OS ACCESS
						STORAGE

DRAWING NO:  
**4829-S1E**

DRAWN BY: J.P.

DATE: 4/1/2020

SCALE: 1"=32"

REVISION(S):  
---



**LIFE LINE**  
EMERGENCY VEHICLES  
1 Life Line Dr. P.O. Box 299  
Sumner, IA 50674 Sumner, IA 50674

DIMENSIONS SHOWN ARE APPROXIMATE AND MAY CHANGE DURING THE CONSTRUCTION PROCESS. PRINTS ARE FOR GRAPHICAL REPRESENTATION ONLY AND NOT FOR DESIGN PURPOSES.

Tolerances:  
 3rd angle projection only  
 Ang. Tol: ±1°  
 Dim. Tol: ±1"

THIS DRAWING IS THE PROPERTY OF LIFE LINE EMERGENCY VEHICLES, WHICH CLAIMS PROPRIETARY RIGHTS IN THE MATERIAL DISCLOSED. IT IS ISSUED IN CONFIDENCE FOR ENGINEERING INFORMATION ONLY AND MAY NOT BE COPIED OR USED FOR MANUFACTURING OF ANYTHING SHOWN WITHOUT SPECIFIC WRITTEN PERMISSION OF LIFE LINE EMERGENCY VEHICLES.

\*LOWER SECTION W/ DOG LEG IS 32 1/2" INTERIOR WIDTH

FOR DRAWING APPROVAL

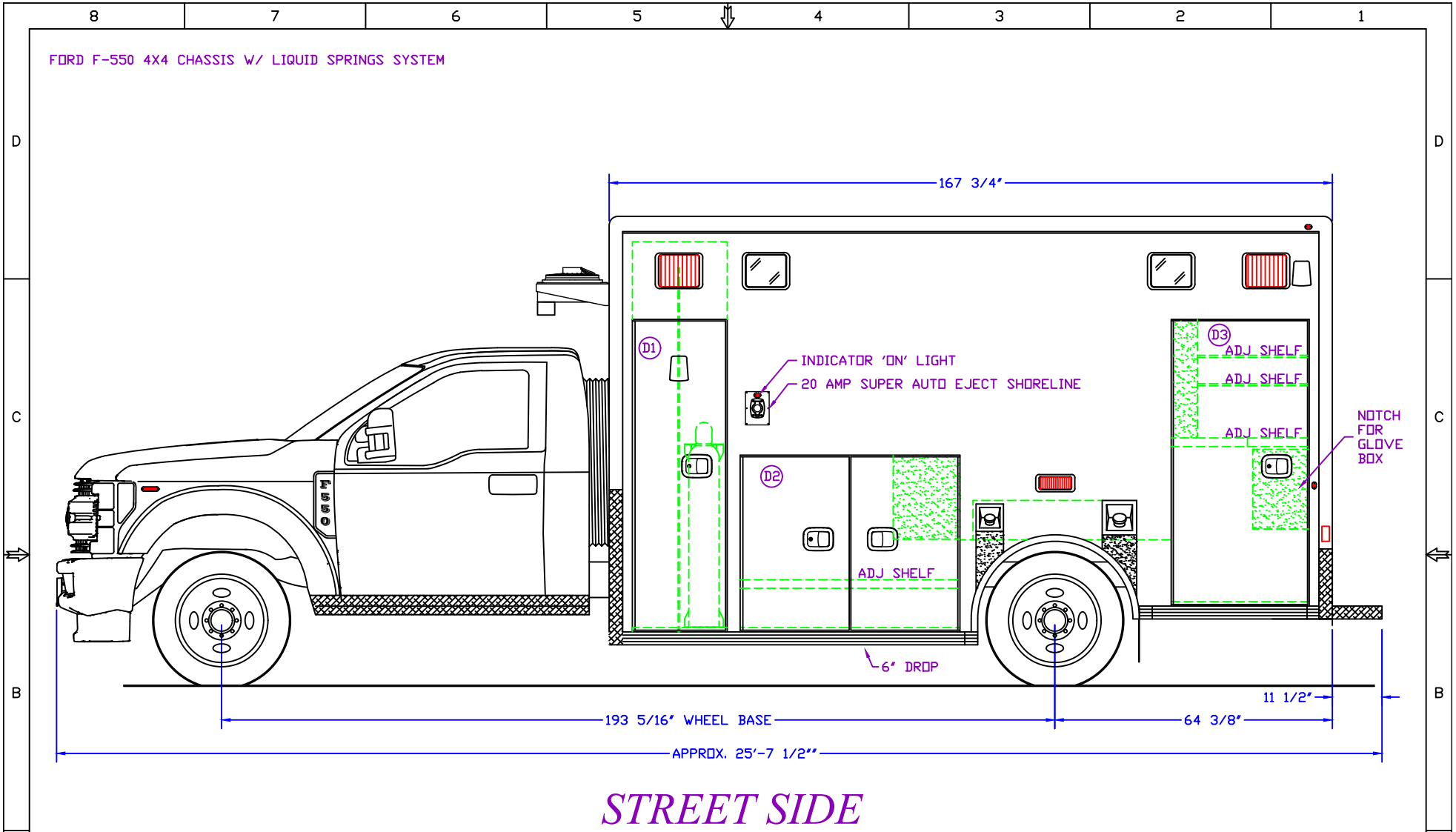
APPROVED BY: \_\_\_\_\_

TITLE: \_\_\_\_\_

DATE: \_\_\_\_\_

**167" TYPE I SUPERLINER, 72" HEADROOM**  
**FOR GORMAN EMERGENCY VEHICLES DEMO**

FORD F-550 4X4 CHASSIS W/ LIQUID SPRINGS SYSTEM



***STREET SIDE***

COMPT.	INTERIOR HEIGHT	PASS-THRU HEIGHT	INTERIOR WIDTH	PASS-THRU WIDTHS	DEPTH	DESCRIPTION
D1	88 1/2"	70 1/2"	21 1/2"	17"	19 1/4"	O2 STORAGE
D2	39"	39"	50 1/2"	43"	19 1/4"	STORAGE
D3	64 1/2"	64 1/2"	31 1/2"	27"	18 1/4"	IS/OS STORAGE

DRAWING NO:  
**4829-S1E**

DRAWN BY: J.P.

DATE: 4/1/2020

SCALE: 1"=32"

REVISION(S):  
---



**LIFE LINE**  
EMERGENCY VEHICLES  
1 Life Line Dr. P.O. Box 299  
Sumner, IA 50674 Sumner, IA 50674

DIMENSIONS SHOWN ARE APPROXIMATE AND MAY CHANGE DURING THE CONSTRUCTION PROCESS. PRINTS ARE FOR GRAPHICAL REPRESENTATION ONLY AND NOT FOR DESIGN PURPOSES.

Tolerances:  
  
 Ang. Tol: ±1°  
 Dim. Tol: ±1"

THIS DRAWING IS THE PROPERTY OF LIFE LINE EMERGENCY VEHICLES, WHICH CLAIMS PROPRIETARY RIGHTS IN THE MATERIAL DISCLOSED. IT IS ISSUED IN CONFIDENCE FOR ENGINEERING INFORMATION ONLY AND MAY NOT BE COPIED OR USED FOR MANUFACTURING OF ANYTHING SHOWN WITHOUT SPECIFIC WRITTEN PERMISSION OF LIFE LINE EMERGENCY VEHICLES.

NOTE: SHIP SPARE TIRE LOOSE

**FOR DRAWING APPROVAL**

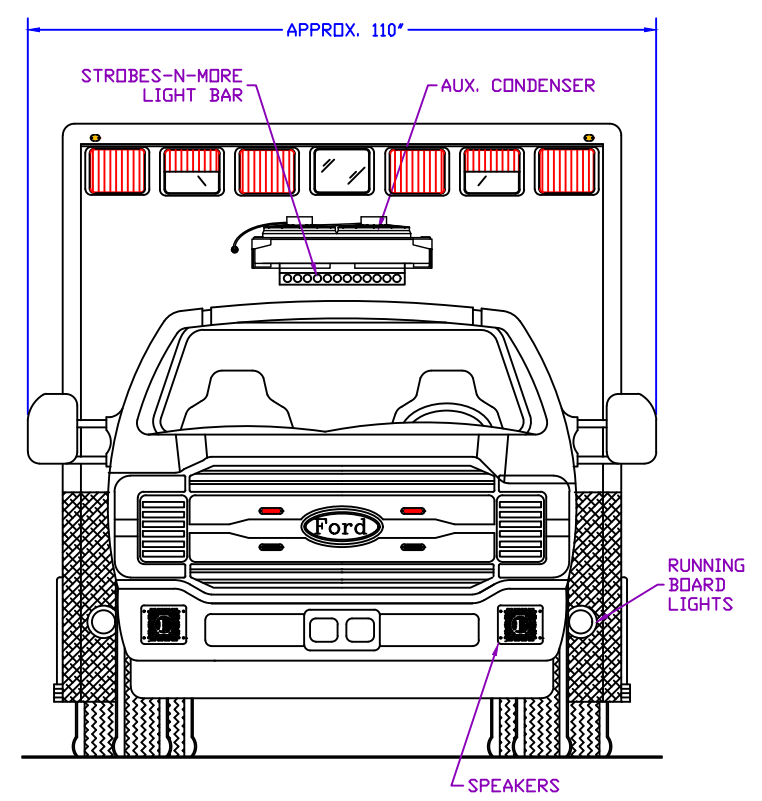
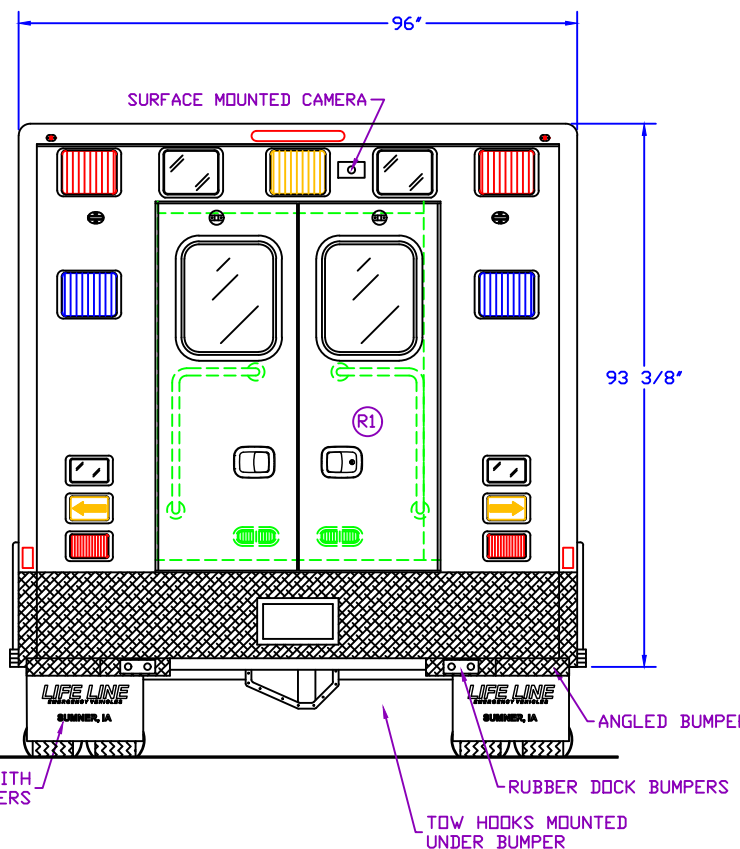
APPROVED BY: \_\_\_\_\_

TITLE: \_\_\_\_\_

DATE: \_\_\_\_\_

**167" TYPE I SUPERLINER, 72" HEADROOM  
FOR GORMAN EMERGENCY VEHICLES DEMO**

FORD F-550 4X4 CHASSIS W/ LIQUID SPRINGS SYSTEM



**REAR**

**FRONT**

COMPT.	INTERIOR HEIGHT	PASS-THRU HEIGHT	INTERIOR WIDTH	PASS-THRU WIDTHS	DEPTH	DESCRIPTION
R1	72 1/4"	60"	48 1/4"	47"	---	REAR ENTRANCE

DRAWING NO:  
**4829-S1E**

DRAWN BY: J.P.

DATE: 4/1/2020

SCALE: 1"=32"

REVISION(S):  
---

**LIFE LINE**  
EMERGENCY VEHICLES  
1 Life Line Dr. P.O. Box 299  
Sumner, IA 50674 Sumner, IA 50674

DIMENSIONS SHOWN ARE APPROXIMATE AND MAY CHANGE DURING THE CONSTRUCTION PROCESS. PRINTS ARE FOR GRAPHICAL REPRESENTATION ONLY AND NOT FOR DESIGN PURPOSES.

Tolerances:  
3rd Angle Projection Only  
Ang. Tol: ±1°  
Dim. Tol: ±1"

THIS DRAWING IS THE PROPERTY OF LIFE LINE EMERGENCY VEHICLES, WHICH CLAIMS PROPRIETARY RIGHTS IN THE MATERIAL DISCLOSED. IT IS ISSUED IN CONFIDENCE FOR ENGINEERING INFORMATION ONLY AND MAY NOT BE COPIED OR USED FOR MANUFACTURING OF ANYTHING SHOWN WITHOUT SPECIFIC WRITTEN PERMISSION OF LIFE LINE EMERGENCY VEHICLES.

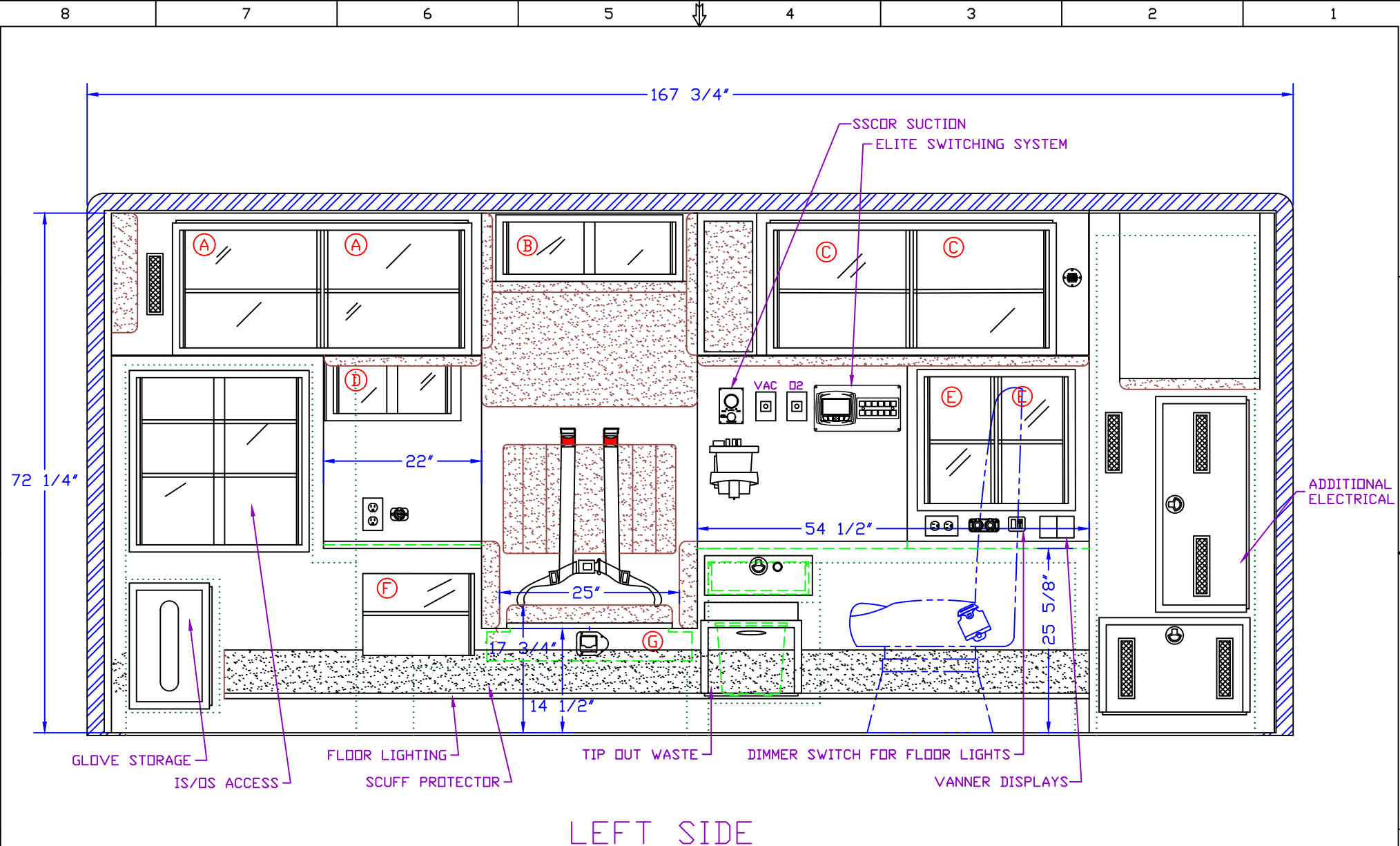
*FOR DRAWING APPROVAL*

APPROVED BY: \_\_\_\_\_

TITLE: \_\_\_\_\_

DATE: \_\_\_\_\_

**167" TYPE I SUPERLINER, 72" HEADROOM  
FOR GORMAN EMERGENCY VEHICLES DEMO**



LEFT SIDE

CABINET	INTERIOR HEIGHT	INTERIOR WIDTH	INTERIOR DEPTH	DESCRIPTION	DOOR STYLE
A	18 3/4"	20"	18 1/4"	STORAGE	SPEED LOAD W/ POSITIVE LATCHES
B	8 1/4"	25"	8"	STORAGE	SLIDING POLYCARBONATE
C	18 3/4"	19 1/4"	16 1/4"	STORAGE	SPEED LOAD W/ POSITIVE LATCHES
D	8"	18"	6"	STORAGE	SLIDING POLYCARBONATE
E	17 1/2"	10"	6"	STORAGE	SLIDING POLYCARBONATE
F	14 5/8"	15 1/2"	19 3/4"	STORAGE	SINGLE SLIDING POLY POCKET
G	4"	28 1/2"	20 1/4"	STORAGE	TOP HINGED LID

DRAWING NO:  
**4829-S11**

DRAWN BY: J.P.

DATE: 4/1/2020

SCALE: 1"=19.5"

REVISION(S):  
---

**LIFE LINE**  
EMERGENCY VEHICLES  
1 Life Line Dr. Sumner, IA 50674  
P.O. Box 299  
Sumner, IA 50674

DIMENSIONS SHOWN ARE APPROXIMATE AND MAY CHANGE DURING THE CONSTRUCTION PROCESS. PRINTS ARE FOR GRAPHICAL REPRESENTATION ONLY AND NOT FOR DESIGN PURPOSES.

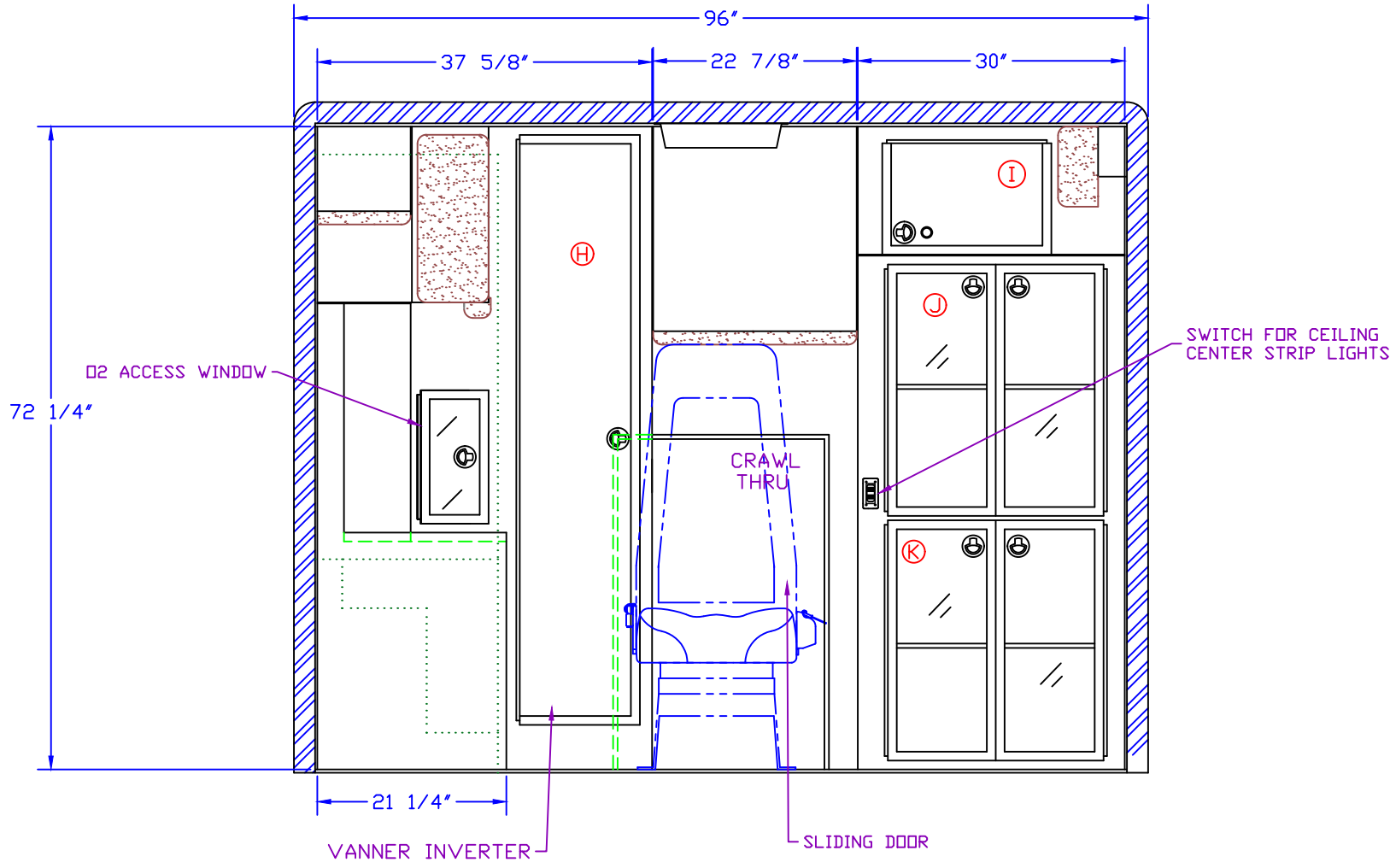
Tolerances:  
  
Avg. Tol.: ±1"  
Dim. Tol.: ±1"

THIS DRAWING IS THE PROPERTY OF LIFE LINE EMERGENCY VEHICLES, WHICH CLAIMS PROPRIETARY RIGHTS IN THE MATERIAL DISCLOSED. IT IS ISSUED IN CONFIDENCE FOR ENGINEERING INFORMATION ONLY AND MAY NOT BE COPIED OR USED FOR MANUFACTURING OF ANYTHING SHOWN WITHOUT SPECIFIC WRITTEN PERMISSION OF LIFE LINE EMERGENCY VEHICLES.

FOR DRAWING APPROVAL

APPROVED BY: \_\_\_\_\_  
TITLE: \_\_\_\_\_  
DATE: \_\_\_\_\_

167" TYPE I SUPERLINER, 72" HEADROOM  
FOR GORMAN EMERGENCY VEHICLES DEMO



FRONT VIEW

CABINET	INTERIOR HEIGHT	INTERIOR WIDTH	INTERIOR DEPTH	DESCRIPTION	DOOR STYLE
H	71 1/4"	16"	8"	ELECTRICAL	SIDE HINGED SOLID SURFACE
I	13 3/8"	18 1/4"	22 3/4"	LOCKING STORAGE	TOP HINGED SOLID SURFACE
J	28 3/4"	18 1/4"	22 3/4"	IS/OS STORAGE	SIDE HINGED FRAMED POLY
K	28"	26"	22 3/4"	IS/OS STORAGE	SIDE HINGED FRAMED POLY

DRAWING NO: **4829-S11**  
 DRAWN BY: J.P.  
 DATE: 4/1/2020  
 SCALE: 1"=19.5"  
 REVISION(S): ---

**LIFE LINE**  
 EMERGENCY VEHICLES  
 1 Life Line Dr. P.O. Box 299  
 Sumner, IA 50674 Sumner, IA 50674

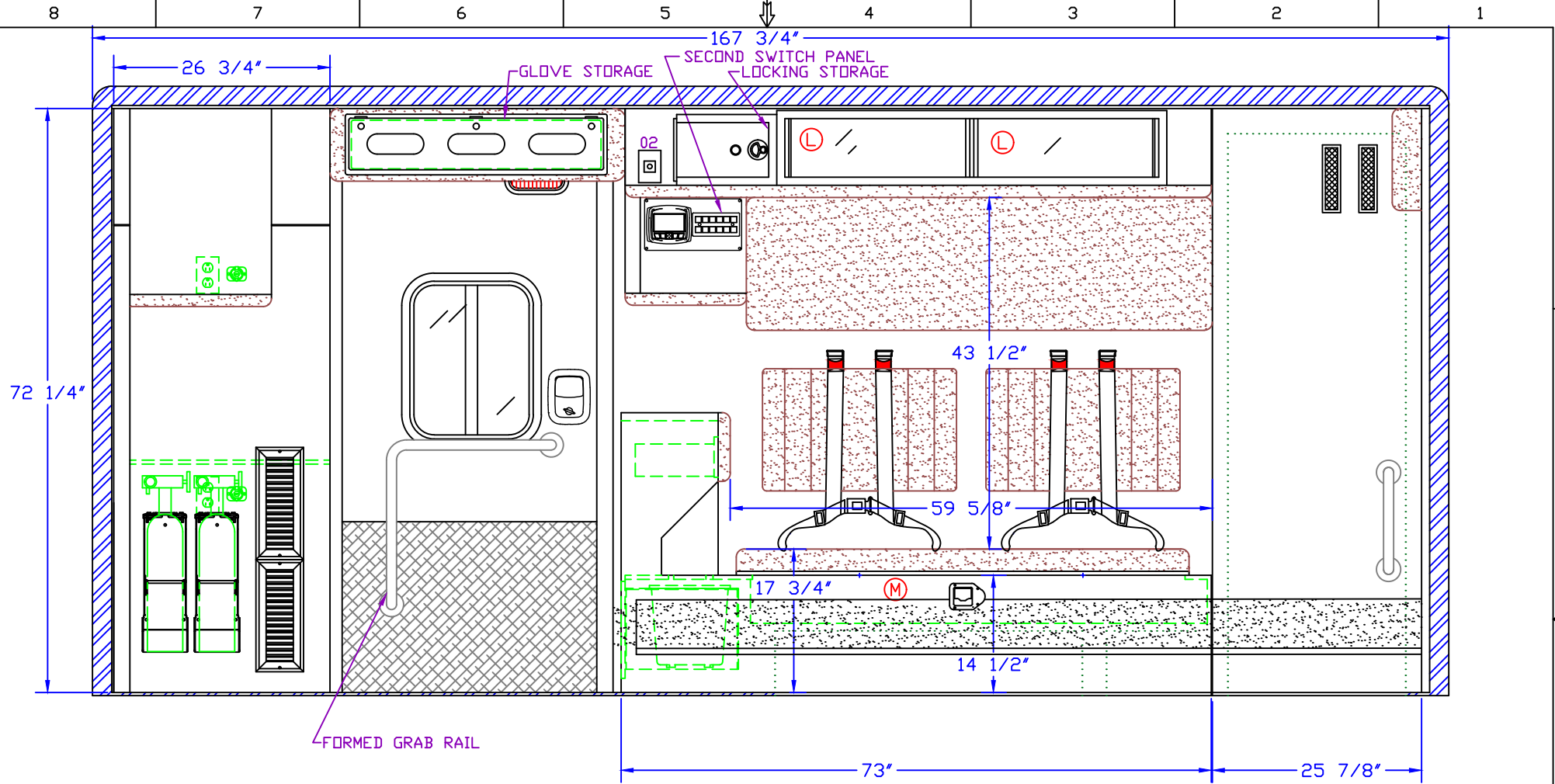
*FOR DRAWING APPROVAL*  
 APPROVED BY: \_\_\_\_\_  
 TITLE: \_\_\_\_\_  
 DATE: \_\_\_\_\_

**167" TYPE I SUPERLINER, 72" HEADROOM  
 FOR GORMAN EMERGENCY VEHICLES DEMO**

DIMENSIONS SHOWN ARE APPROXIMATE AND MAY CHANGE DURING THE CONSTRUCTION PROCESS. PRINTS ARE FOR GRAPHICAL REPRESENTATION ONLY AND NOT FOR DESIGN PURPOSES.

Tolerances:  
 Third Angle Projection (ANSI)  
 Ang. Tol.: ±1'  
 Dim. Tol.: ±1'

THIS DRAWING IS THE PROPERTY OF LIFE LINE EMERGENCY VEHICLES, WHICH CLAIMS PROPRIETARY RIGHTS IN THE MATERIAL DISCLOSED. IT IS ISSUED IN CONFIDENCE FOR ENGINEERING INFORMATION ONLY AND MAY NOT BE COPIED OR USED FOR MANUFACTURING OF ANYTHING SHOWN WITHOUT SPECIFIC WRITTEN PERMISSION OF LIFE LINE EMERGENCY VEHICLES.



RIGHT SIDE

CABINET	INTERIOR HEIGHT	INTERIOR WIDTH	INTERIOR DEPTH	DESCRIPTION	DOOR STYLE
L	8 1/4"	23 1/4"	8"	STORAGE	SLIDING POLYCARBONATE
M	5 7/16"	52 1/2"	20 1/4"	STORAGE	TOP HINGED LID

DRAWING NO: **4829-S11**  
 DRAWN BY: J.P.  
 DATE: 4/1/2020  
 SCALE: 1"=19.5"  
 REVISION(S): ---

**LIFE LINE**  
 EMERGENCY VEHICLES  
 1 Life Line Dr. P.O. Box 299  
 Sumner, IA 50674 Sumner, IA 50674

DIMENSIONS SHOWN ARE APPROXIMATE AND MAY CHANGE DURING THE CONSTRUCTION PROCESS. PRINTS ARE FOR GRAPHICAL REPRESENTATION ONLY AND NOT FOR DESIGN PURPOSES.

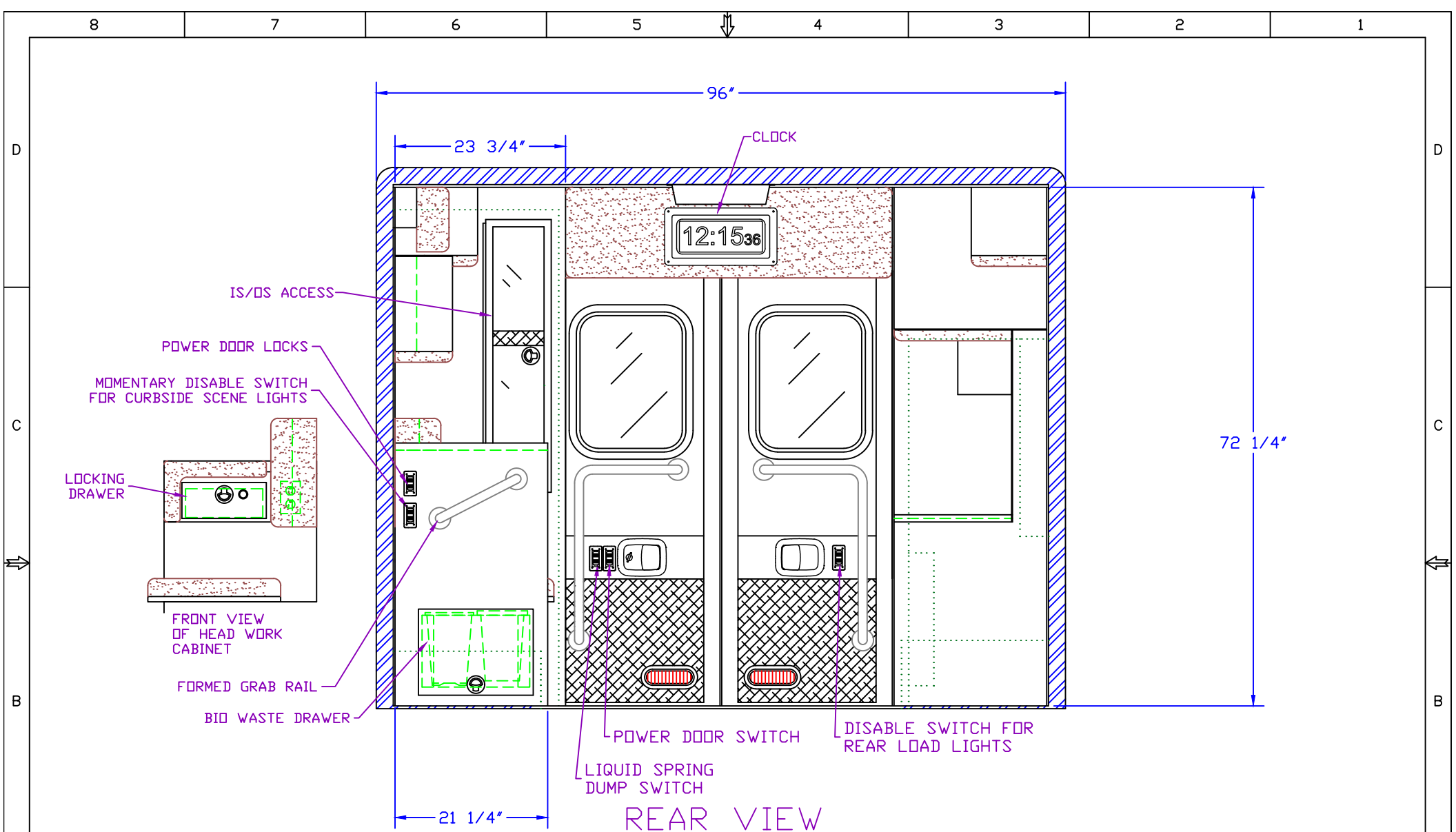
Tolerances:  
 Third Angle Projection (ANSI)  
 Ang. Tol.: ±1°  
 Dim. Tol.: ±1/16"

THIS DRAWING IS THE PROPERTY OF LIFE LINE EMERGENCY VEHICLES, WHICH CLAIMS PROPRIETARY RIGHTS IN THE MATERIAL DISCLOSED. IT IS ISSUED IN CONFIDENCE FOR ENGINEERING INFORMATION ONLY AND MAY NOT BE COPIED OR USED FOR MANUFACTURING WITHOUT WRITTEN PERMISSION OF LIFE LINE EMERGENCY VEHICLES.

**167" TYPE I SUPERLINER, 72" HEADROOM  
 FOR GORMAN EMERGENCY VEHICLES DEMO**

*FOR DRAWING APPROVAL*  
 APPROVED BY: \_\_\_\_\_  
 TITLE: \_\_\_\_\_  
 DATE: \_\_\_\_\_





CABINET	INTERIOR HEIGHT	INTERIOR WIDTH	INTERIOR DEPTH	DESCRIPTION	DOOR STYLE
*					

DRAWING NO: **4829-S11**

DRAWN BY: J.P.

DATE: 4/1/2020

SCALE: 1"=19.5"

REVISION(S):

---

**LIFE LINE**  
EMERGENCY VEHICLES

1 Life Line Dr. P.O. Box 299  
Sumner, IA 50674 Sumner, IA 50674

DIMENSIONS SHOWN ARE APPROXIMATE AND MAY CHANGE DURING THE CONSTRUCTION PROCESS. PRINTS ARE FOR GRAPHICAL REPRESENTATION ONLY AND NOT FOR DESIGN PURPOSES.

Tolerances:  
  
 Ang. Tol: ±1'  
 Dim. Tol: ±1'

THIS DRAWING IS THE PROPERTY OF LIFE LINE EMERGENCY VEHICLES, WHICH CLAIMS PROPRIETARY RIGHTS IN THE MATERIAL DISCLOSED. IT IS ISSUED IN CONFIDENCE FOR ENGINEERING INFORMATION ONLY AND MAY NOT BE COPIED OR USED FOR MANUFACTURING OF ANYTHING SHOWN WITHOUT SPECIFIC WRITTEN PERMISSION OF LIFE LINE EMERGENCY VEHICLES.

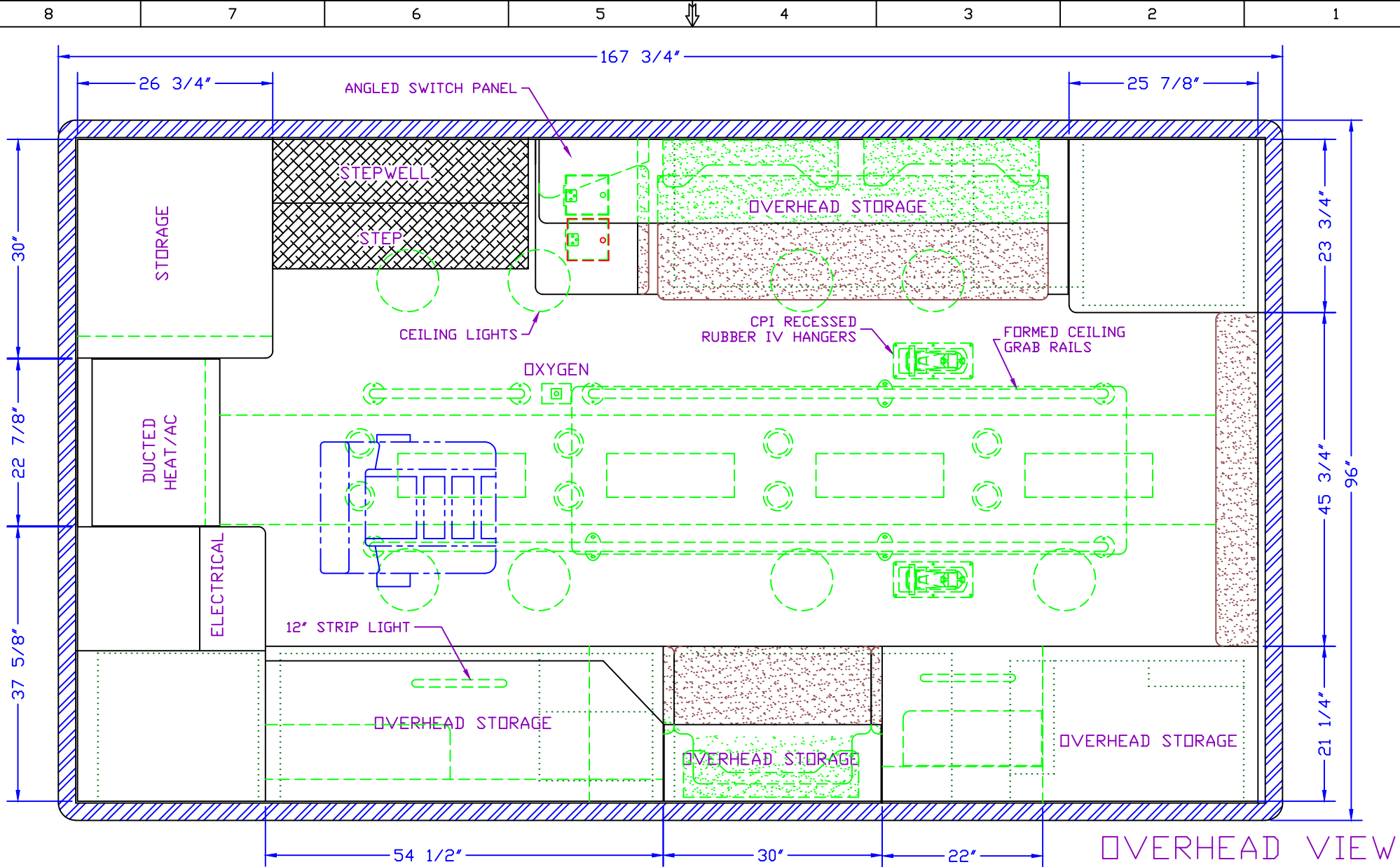
**FOR DRAWING APPROVAL**

APPROVED BY: \_\_\_\_\_

TITLE: \_\_\_\_\_

DATE: \_\_\_\_\_

**167" TYPE I SUPERLINER, 72" HEADROOM FOR GORMAN EMERGENCY VEHICLES DEMO**



OVERHEAD VIEW

CABINET	INTERIOR HEIGHT	INTERIOR WIDTH	INTERIOR DEPTH	DESCRIPTION	DOOR STYLE

DRAWING NO: **4829-S11**  
 DRAWN BY: J.P.  
 DATE: 4/1/2020  
 SCALE: 1"=19.5"  
 REVISION(S):

**LIFE LINE**  
**EMERGENCY VEHICLES**  
 1 Life Line Dr. Sumner, IA 50674  
 P.O. Box 299 Sumner, IA 50674

FOR DRAWING APPROVAL  
 APPROVED BY: \_\_\_\_\_  
 TITLE: \_\_\_\_\_  
 DATE: \_\_\_\_\_

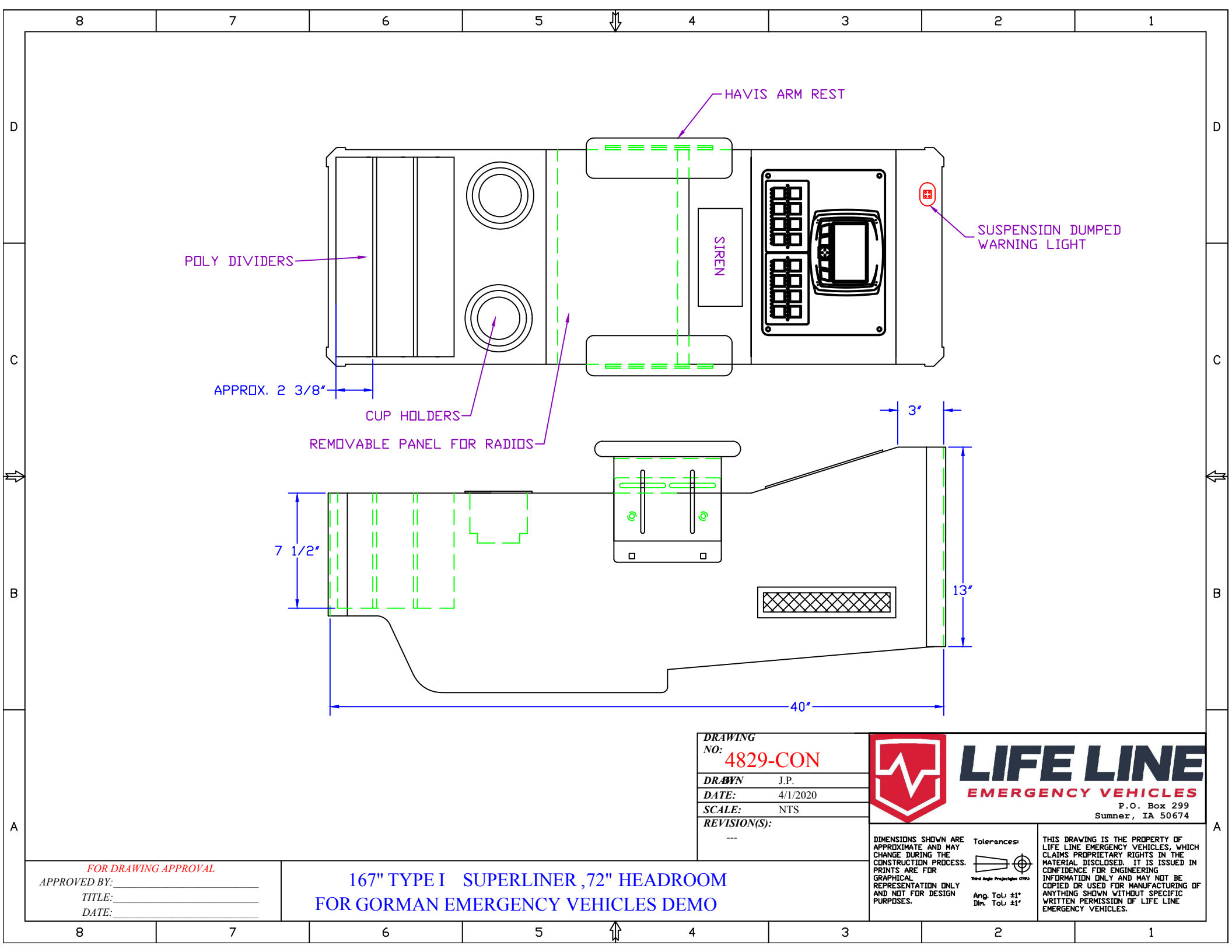
**167" TYPE I SUPERLINER, 72" HEADROOM  
 FOR GORMAN EMERGENCY VEHICLES DEMO**

DIMENSIONS SHOWN ARE APPROXIMATE AND MAY CHANGE DURING THE CONSTRUCTION PROCESS. PRINTS ARE FOR GRAPHICAL REPRESENTATION ONLY AND NOT FOR DESIGN PURPOSES.

Tolerances:  
  
 Ang. Tol.: ±1°  
 Dim. Tol.: ±1/16"

THIS DRAWING IS THE PROPERTY OF LIFE LINE EMERGENCY VEHICLES, WHICH CLAIMS PROPRIETARY RIGHTS IN THE MATERIAL DISCLOSED. IT IS ISSUED IN CONFIDENCE FOR ENGINEERING INFORMATION ONLY AND MAY NOT BE COPIED OR USED FOR MANUFACTURING WITHOUT SPECIFIC WRITTEN PERMISSION OF LIFE LINE EMERGENCY VEHICLES.





POLY DIVIDERS

HAVIS ARM REST

SUSPENSION DUMPED WARNING LIGHT

APPROX. 2 3/8"

CUP HOLDERS

REMOVABLE PANEL FOR RADIOS

SIREN

7 1/2"

3"

13"

40"

<b>DRAWING NO:</b> 4829-CON	
<b>DRAWN</b>	J.P.
<b>DATE:</b>	4/1/2020
<b>SCALE:</b>	NTS
<b>REVISION(S):</b>	---



**LIFE LINE**  
**EMERGENCY VEHICLES**  
 P.O. Box 299  
 Sumner, IA 50674

DIMENSIONS SHOWN ARE APPROXIMATE AND MAY CHANGE DURING THE CONSTRUCTION PROCESS. PRINTS ARE FOR GRAPHICAL REPRESENTATION ONLY AND NOT FOR DESIGN PURPOSES.

Tolerances:  
  
 Third Angle Projection (ANSI)  
 Ang. Tol.: ±1°  
 Dip. Tol.: ±1°

THIS DRAWING IS THE PROPERTY OF LIFE LINE EMERGENCY VEHICLES, WHICH CLAIMS PROPRIETARY RIGHTS IN THE MATERIAL DISCLOSED. IT IS ISSUED IN CONFIDENCE FOR ENGINEERING INFORMATION ONLY AND MAY NOT BE COPIED OR USED FOR MANUFACTURING OF ANYTHING SHOWN WITHOUT SPECIFIC WRITTEN PERMISSION OF LIFE LINE EMERGENCY VEHICLES.

**FOR DRAWING APPROVAL**  
 APPROVED BY: \_\_\_\_\_  
 TITLE: \_\_\_\_\_  
 DATE: \_\_\_\_\_

**167" TYPE I SUPERLINER, 72" HEADROOM  
 FOR GORMAN EMERGENCY VEHICLES DEMO**