

CURB SIDE

COMPT.	INTERIOR HEIGHT	PASS-THRU HEIGHT	INTERIOR WIDTH	PASS-THRU WIDTHS	DEPTH	DESCRIPTION	DRAWING NO:
P1	56"	55"	18"	15 1/2"	26"	IS/OS STORAGE	4379-SDE
P2	12"	11"	20"	18 1/2"	17 3/4"	BATTERY TRAY	DRAWN BY: J.P.
P3	72 1/4"	82 1/2"	34 1/2"	30"	---	SIDE ENTRY DOOR	DATE: 2/20/18
P4	79 1/2"	79 1/2"	27 1/2"	23"	17 3/4"	BB/STAIR CHAIR STORAGE	SCALE: 1"=32"
							REVISION(S):

Life Line
EMERGENCY VEHICLES

1 Life Line Dr.
Sumner, IA 50674

P.O. Box 299
Sumner, IA 50674

DIMENSIONS SHOWN ARE APPROXIMATE AND MAY CHANGE DURING THE CONSTRUCTION PROCESS. PRINTS ARE FOR GRAPHICAL REPRESENTATION ONLY AND NOT FOR DESIGN PURPOSES.

Tolerances:

Third Angle Projection (ANSI)

Ang. Tol: ±1°
Dim. Tol: ±1/16"

THIS DRAWING IS THE PROPERTY OF LIFE LINE EMERGENCY VEHICLES, WHICH CLAIMS PROPRIETARY RIGHTS IN THE MATERIAL DISCLOSED. IT IS ISSUED IN CONFIDENCE FOR ENGINEERING INFORMATION ONLY AND MAY NOT BE COPIED OR USED FOR MANUFACTURING OF ANYTHING SHOWN WITHOUT SPECIFIC WRITTEN PERMISSION OF LIFE LINE EMERGENCY VEHICLES.

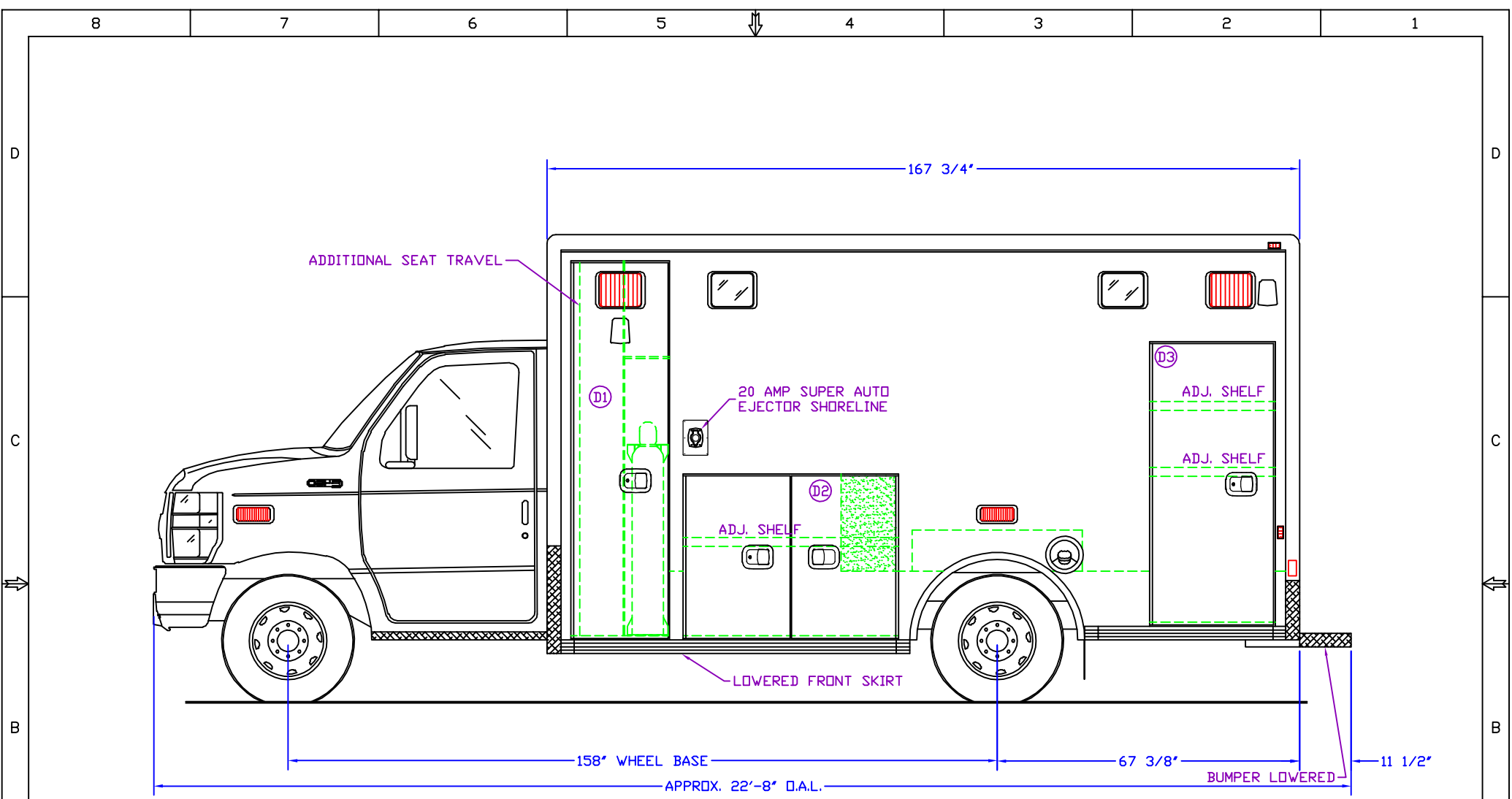
FOR DRAWING APPROVAL

APPROVED BY: _____

TITLE: _____

DATE: _____

**167" TYPE III SUPERLINER ,72" HEADROOM
FOR GORMAN EMERGENCY VEHICLES DEMO - ELMA, NY.**



STREET SIDE

COMPT.	INTERIOR HEIGHT	PASS-THRU HEIGHT	INTERIOR WIDTH	PASS-THRU WIDTHS	DEPTH	DESCRIPTION
D1	82 1/2"	82 1/2"	19 1/2"	17"	17 3/4"	02/BB STORAGE
D2	35"	35"	47 1/2"	40"	17 3/4"	STORAGE
D3	61 1/2"	61 1/2"	27 1/2"	23"	16 3/4"	STORAGE

DRAWING NO:
4379-SDE

DRAWN BY: J.P.

DATE: 2/20/18

SCALE: 1"=32"

REVISION(S):

Life Line
EMERGENCY VEHICLES

1 Life Line Dr.
Sumner, IA 50674

P.O. Box 299
Sumner, IA 50674

NOTE: SHIP SPARE TIRE LOOSE

FOR DRAWING APPROVAL

APPROVED BY: _____

TITLE: _____

DATE: _____

**167" TYPE III SUPERLINER ,72" HEADROOM
FOR GORMAN EMERGENCY VEHICLES DEMO - ELMA, NY.**

DIMENSIONS SHOWN ARE APPROXIMATE AND MAY CHANGE DURING THE CONSTRUCTION PROCESS. PRINTS ARE FOR GRAPHICAL REPRESENTATION ONLY AND NOT FOR DESIGN PURPOSES.

Tolerances:

Third Angle Projection (ANSI)

Ang. Tol: ±1°
Dim. Tol: ±1/16"

THIS DRAWING IS THE PROPERTY OF LIFE LINE EMERGENCY VEHICLES, WHICH CLAIMS PROPRIETARY RIGHTS IN THE MATERIAL DISCLOSED. IT IS ISSUED IN CONFIDENCE FOR ENGINEERING INFORMATION ONLY AND MAY NOT BE COPIED OR USED FOR MANUFACTURING OF ANYTHING SHOWN WITHOUT SPECIFIC WRITTEN PERMISSION OF LIFE LINE EMERGENCY VEHICLES.

8 7 6 5 4 3 2 1

D

C

B

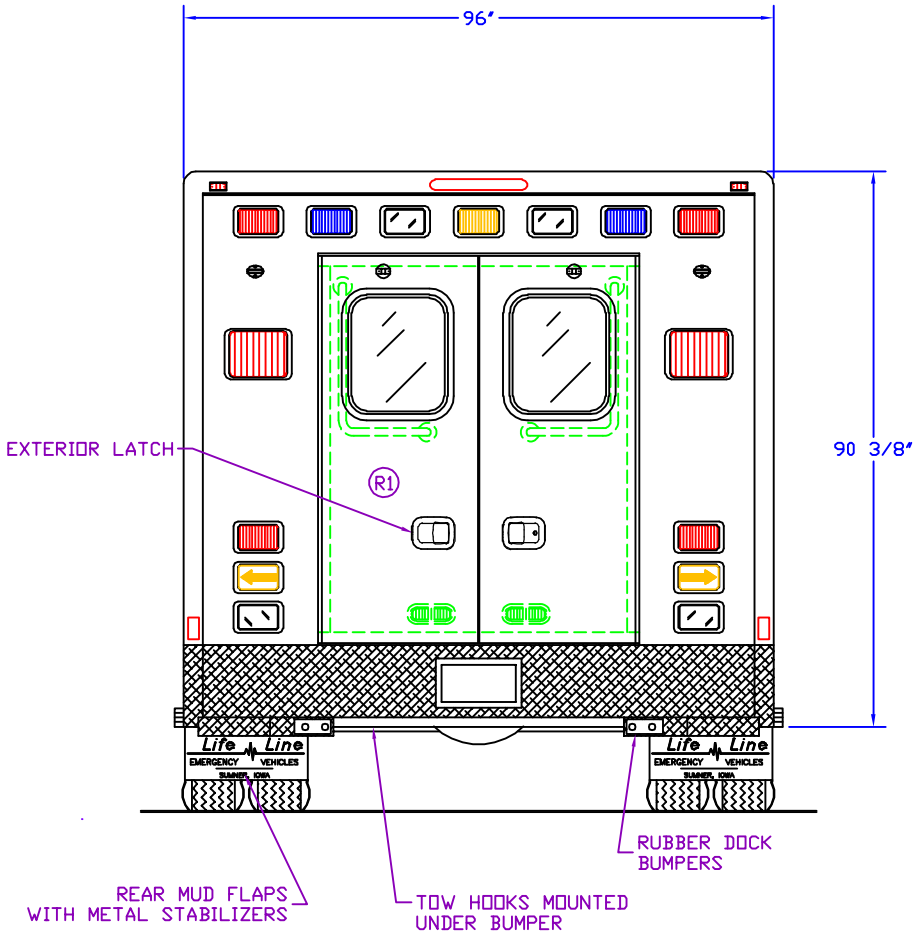
A

D

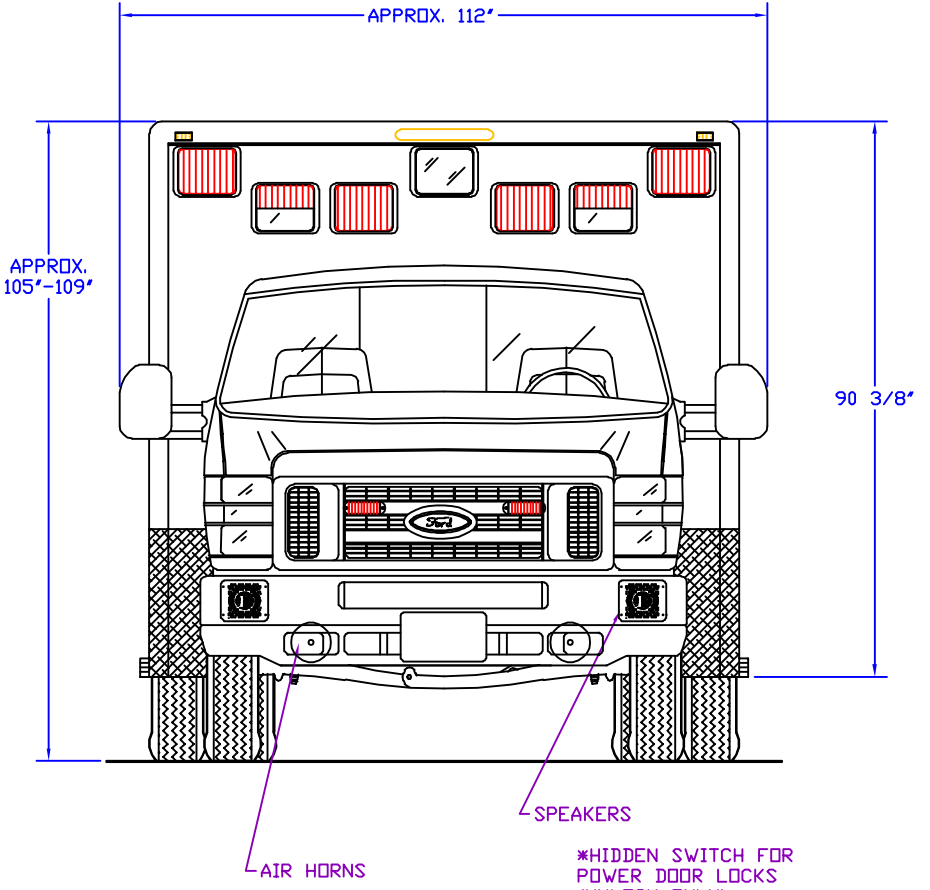
C

B

A



REAR



FRONT

COMPT.	INTERIOR HEIGHT	PASS-THRU HEIGHT	INTERIOR WIDTH	PASS-THRU WIDTHS	DEPTH	DESCRIPTION
R1	72 1/4"	60"	49 3/4"	49 1/4"	---	REAR ENTRANCE

DRAWING NO:
4379-SDE

DRAWN BY: J.P.

DATE: 2/20/18

SCALE: 1"=32"

REVISION(S):

Life Line

EMERGENCY **30** Hours RESPONSE VEHICLES

1 Life Line Dr.
Sumner, IA 50674

P.O. Box 299
Sumner, IA 50674

FOR DRAWING APPROVAL

APPROVED BY: _____

TITLE: _____

DATE: _____

167" TYPE III SUPERLINER ,72" HEADROOM
FOR GORMAN EMERGENCY VEHICLES DEMO - ELMA, NY.

DIMENSIONS SHOWN ARE APPROXIMATE AND MAY CHANGE DURING THE CONSTRUCTION PROCESS. PRINTS ARE FOR GRAPHICAL REPRESENTATION ONLY AND NOT FOR DESIGN PURPOSES.

Tolerances:
 Third Angle Projection (ANSI)
 Ang. Tol: ±1°
 Dim. Tol: ±1/16"

THIS DRAWING IS THE PROPERTY OF LIFE LINE EMERGENCY VEHICLES, WHICH CLAIMS PROPRIETARY RIGHTS IN THE MATERIAL DISCLOSED. IT IS ISSUED IN CONFIDENCE FOR ENGINEERING INFORMATION ONLY AND MAY NOT BE COPIED OR USED FOR MANUFACTURING OF ANYTHING SHOWN WITHOUT SPECIFIC WRITTEN PERMISSION OF LIFE LINE EMERGENCY VEHICLES.

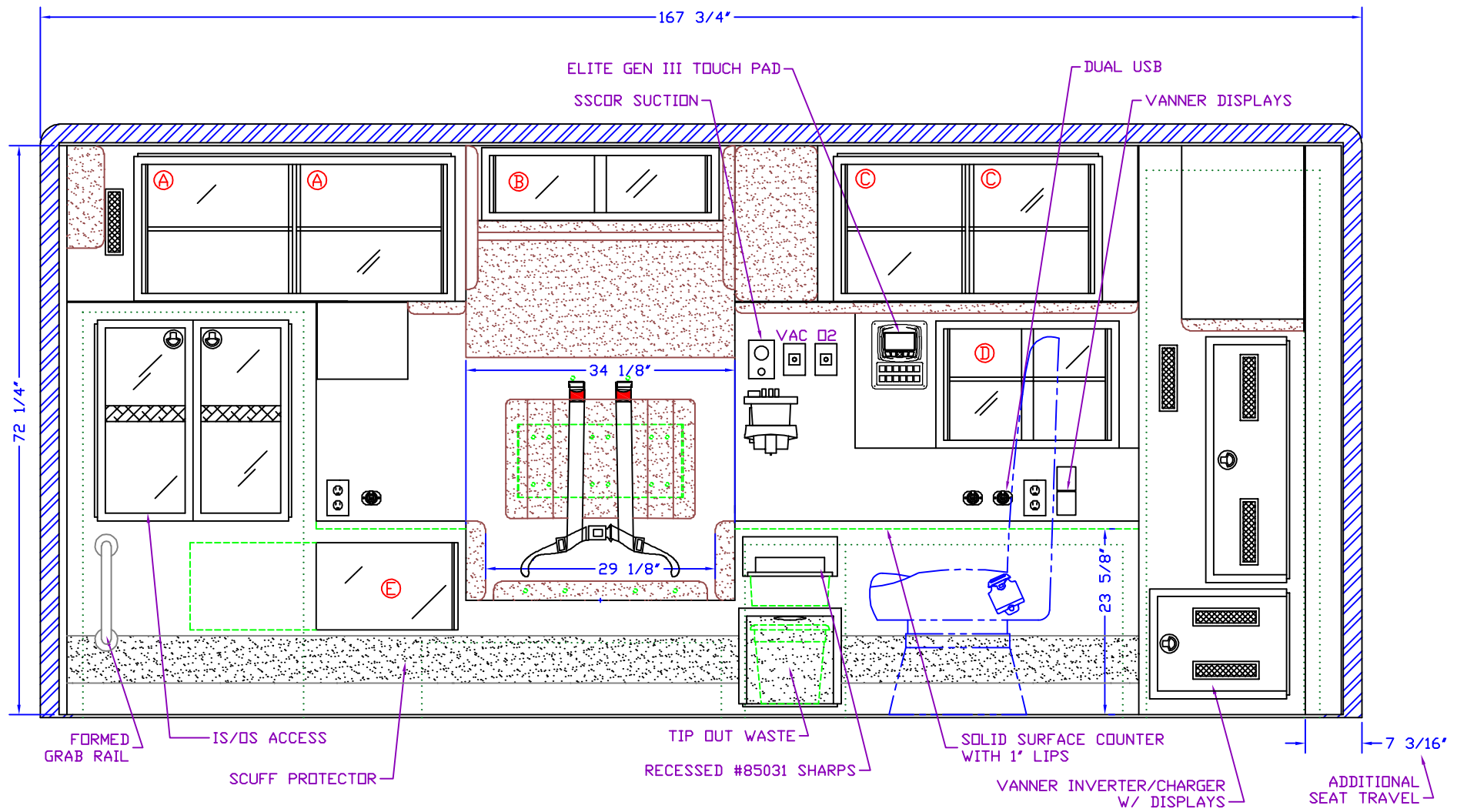
8 7 6 5 4 3 2 1

8 7 6 5 4 3 2 1

D

C

B



LEFT SIDE

CABINET	INTERIOR HEIGHT	INTERIOR WIDTH	INTERIOR DEPTH	DESCRIPTION	DOOR STYLE	DRAWING NO:
A	18 3/4"	19 1/2"	16 3/4"	STORAGE	SPEED LOAD W/ POSITIVE LATCHES	4379-SDI
B	8 1/4"	29"	4 1/2"	STORAGE	SLIDING POLYCARBONATE	DRAWN BY: J.P.
C	18 3/4"	16 1/4"	16 3/4"	STORAGE	SPEED LOAD W/ POSITIVE LATCHES	DATE: 2/21/18
D	15"	22 1/4"	8"	STORAGE	SLIDING POLYCARBONATE	SCALE: 1" = 19.5"
E	12 1/2"	18 1/2"	18 1/4"	STORAGE	SINGLE SLIDING POCKET DOOR	REVISION(S):

Life Line
EMERGENCY 30 Years VEHICLES

1 Life Line Dr. Sunner, IA 50674 P.O. Box 299 Sunner, IA 50674

DIMENSIONS SHOWN ARE APPROXIMATE AND MAY CHANGE DURING THE CONSTRUCTION PROCESS. PRINTS ARE FOR GRAPHICAL REPRESENTATION ONLY AND NOT FOR DESIGN PURPOSES.

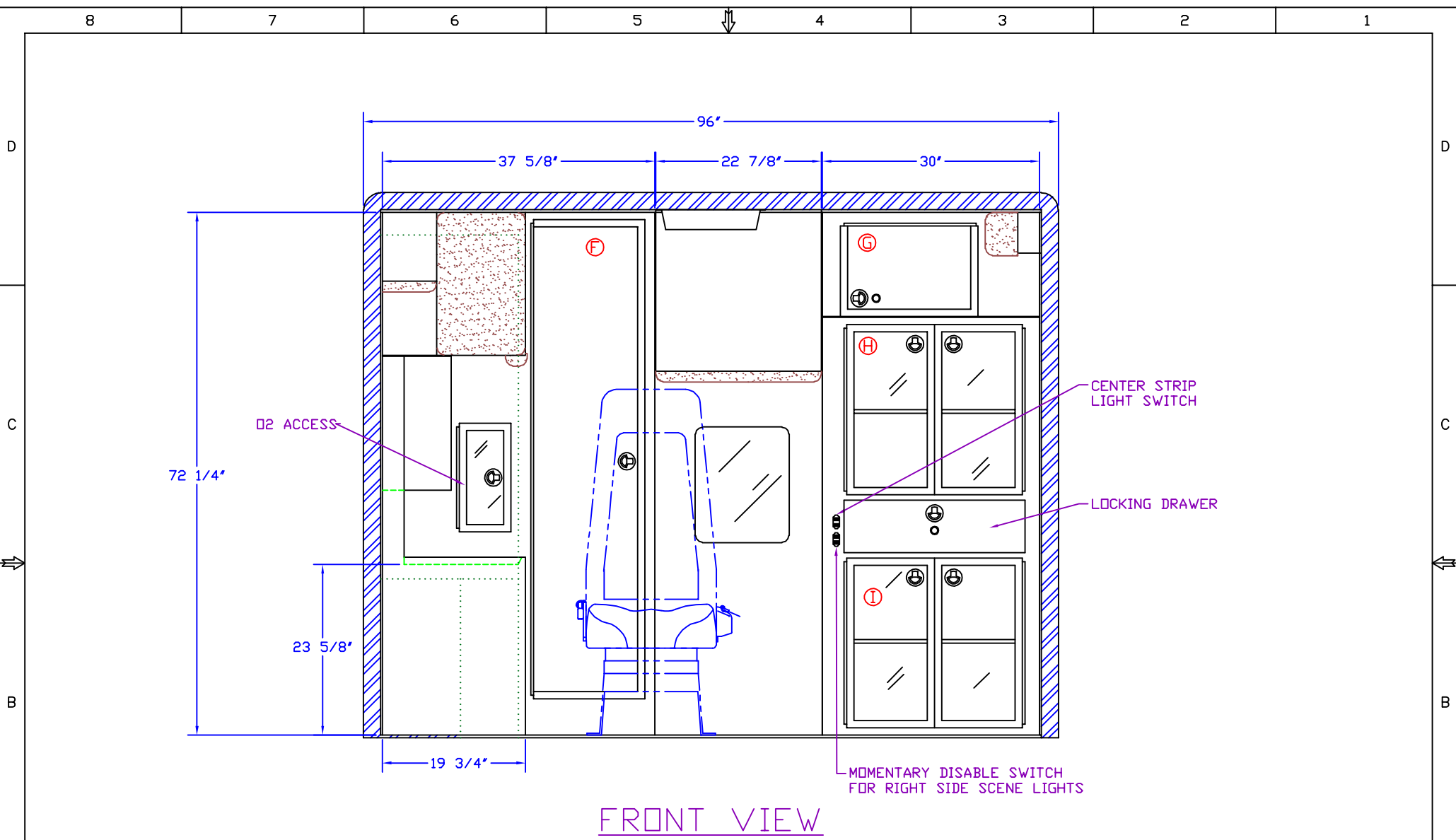
Tolerances:
Third Angle Projection (ANSI)
Ang. Tol: ±1°
Dim. Tol: ±1/16"

THIS DRAWING IS THE PROPERTY OF LIFE LINE EMERGENCY VEHICLES, WHICH CLAIMS PROPRIETARY RIGHTS IN THE MATERIAL DISCLOSED. IT IS ISSUED IN CONFIDENCE FOR ENGINEERING INFORMATION ONLY AND MAY NOT BE COPIED OR USED FOR MANUFACTURING OF ANYTHING SHOWN WITHOUT SPECIFIC WRITTEN PERMISSION OF LIFE LINE EMERGENCY VEHICLES.

FOR DRAWING APPROVAL
APPROVED BY: _____
TITLE: _____
DATE: _____

167" TYPE III SUPERLINER, 72" HEADROOM
FOR GORMAN EMERGENCY VEHICLES DEMO - ELMA, NY.

8 7 6 5 4 3 2 1



FRONT VIEW

CABINET	INTERIOR HEIGHT	INTERIOR WIDTH	INTERIOR DEPTH	DESCRIPTION	DOOR STYLE
F	71 1/4"	16"	9"	ELECTRICAL	SIDE HINGED SOLID SURFACE
G	13 3/8"	18 1/4"	18"	LOCKING STORAGE	TOP HINGED SOLID SURFACE
H	24"	26"	18"	STORAGE	SIDE HINGED FRAMED POLY
I	24 1/2"	26"	18"	STORAGE	SIDE HINGED FRAMED POLY

DRAWING NO:	4379-SDI
DRAWN BY:	J.P.
DATE:	2/21/18
SCALE:	1" = 19.5"
REVISION(S):	---

Life Line
EMERGENCY VEHICLES

1 Life Line Dr.
Sumner, IA 50674

P.O. Box 299
Sumner, IA 50674

DIMENSIONS SHOWN ARE APPROXIMATE AND MAY CHANGE DURING THE CONSTRUCTION PROCESS. PRINTS ARE FOR GRAPHICAL REPRESENTATION ONLY AND NOT FOR DESIGN PURPOSES.

Tolerances:

Third Angle Projection (ANSI)

Ang. Tol: ±1°
Dim. Tol: ±1"

THIS DRAWING IS THE PROPERTY OF LIFE LINE EMERGENCY VEHICLES, WHICH CLAIMS PROPRIETARY RIGHTS IN THE MATERIAL DISCLOSED. IT IS ISSUED IN CONFIDENCE FOR ENGINEERING INFORMATION ONLY AND MAY NOT BE COPIED OR USED FOR MANUFACTURING OF ANYTHING SHOWN WITHOUT SPECIFIC WRITTEN PERMISSION OF LIFE LINE EMERGENCY VEHICLES.

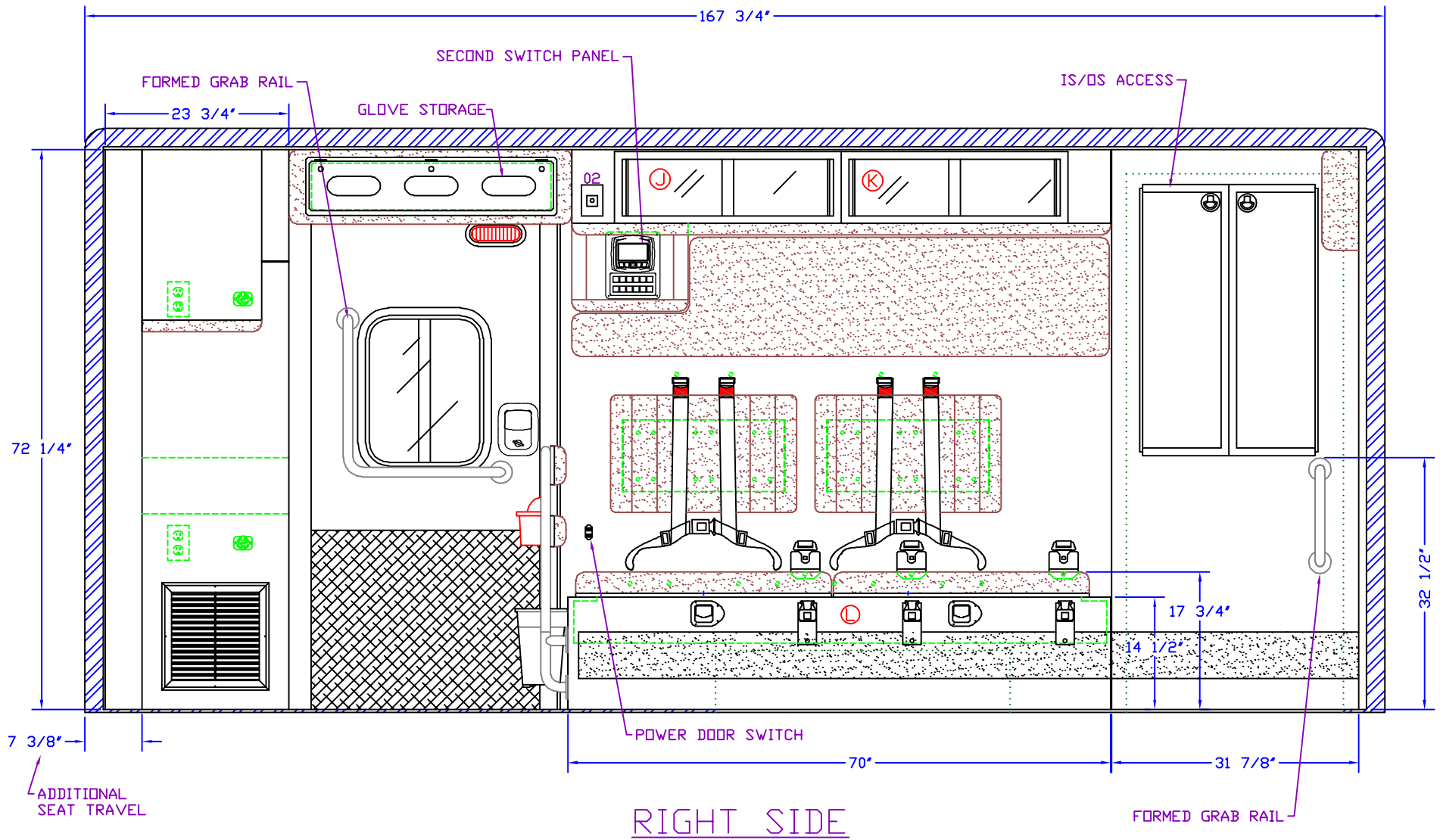
FOR DRAWING APPROVAL

APPROVED BY: _____

TITLE: _____

DATE: _____

**167" TYPE III SUPERLINER ,72" HEADROOM
FOR GORMAN EMERGENCY VEHICLES DEMO - ELMA, NY.**



CABINET	INTERIOR HEIGHT	INTERIOR WIDTH	INTERIOR DEPTH	DESCRIPTION	DOOR STYLE
J	8 1/4"	28 1/4"	8"	STORAGE	SLIDING POLYCARBONATE
K	8 1/4"	28 1/4"	8"	STORAGE	SLIDING POLYCARBONATE
L	5 7/16"	68 3/4"	18 3/4"	STORAGE	TOP HINGED LID

DRAWING NO: **4379-SDI**

DRAWN BY: J.P.

DATE: 2/21/18

SCALE: 1" = 19.5"

REVISION(S):

Life Line
EMERGENCY VEHICLES

1 Life Line Dr.
Sumner, IA 50674

P.O. Box 299
Sumner, IA 50674

DIMENSIONS SHOWN ARE APPROXIMATE AND MAY CHANGE DURING THE CONSTRUCTION PROCESS. PRINTS ARE FOR GRAPHICAL REPRESENTATION ONLY AND NOT FOR DESIGN PURPOSES.

Tolerances:

Third Angle Projection (ANSI)

Ang. Tol: ±1°
Dim. Tol: ±1"

THIS DRAWING IS THE PROPERTY OF LIFE LINE EMERGENCY VEHICLES, WHICH CLAIMS PROPRIETARY RIGHTS IN THE MATERIAL DISCLOSED. IT IS ISSUED IN CONFIDENCE FOR ENGINEERING INFORMATION ONLY AND MAY NOT BE COPIED OR USED FOR MANUFACTURING OF ANYTHING SHOWN WITHOUT SPECIFIC WRITTEN PERMISSION OF LIFE LINE EMERGENCY VEHICLES.

FOR DRAWING APPROVAL

APPROVED BY: _____

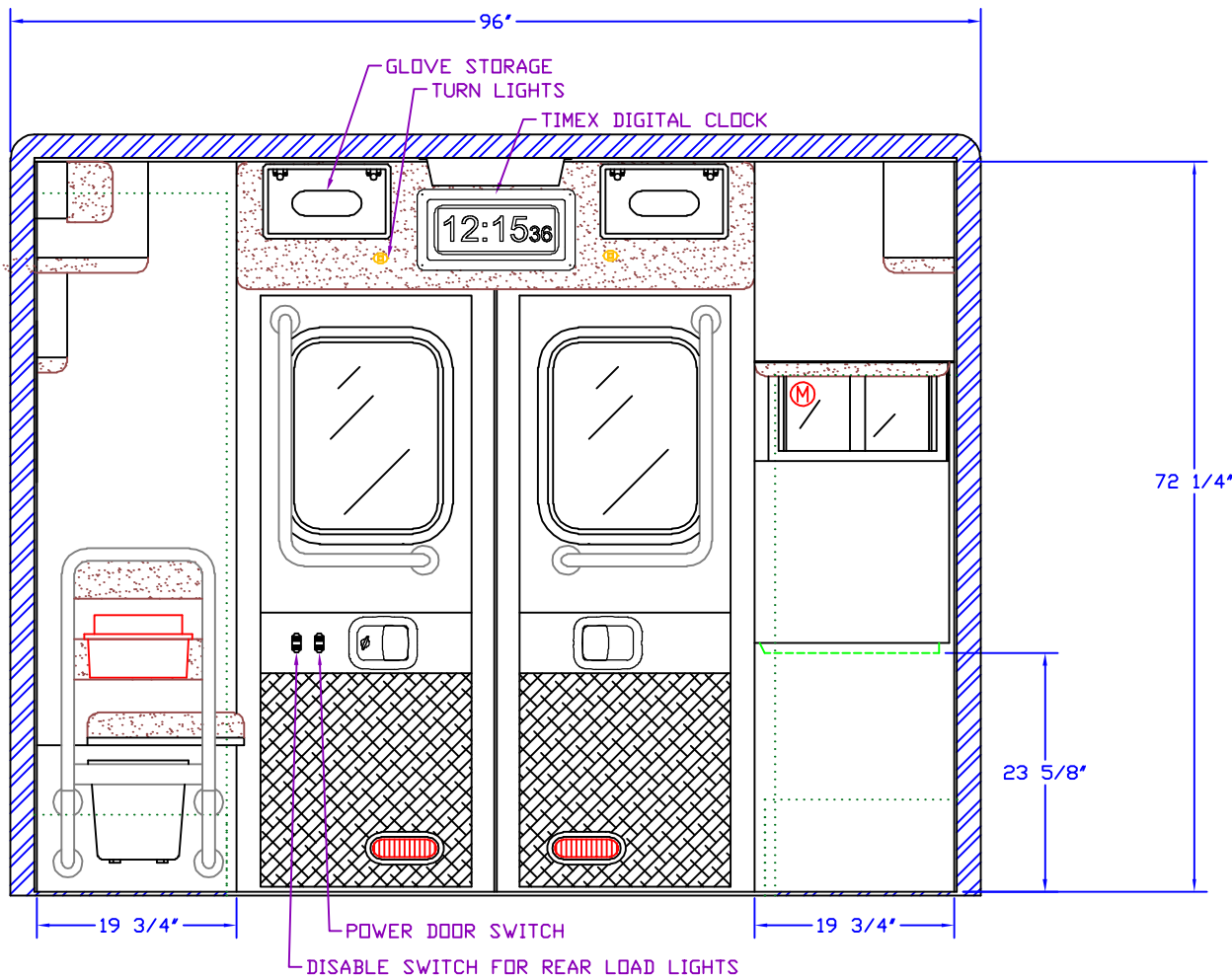
TITLE: _____

DATE: _____

**167" TYPE III SUPERLINER ,72" HEADROOM
FOR GORMAN EMERGENCY VEHICLES DEMO - ELMA, NY.**

8 7 6 5 ↓ 4 3 2 1

8 7 6 5 ↑ 4 3 2 1



REAR VIEW

CABINET	INTERIOR HEIGHT	INTERIOR WIDTH	INTERIOR DEPTH	DESCRIPTION	DOOR STYLE	DRAWING NO:
M	8 3/4"	18"	10"	STORAGE	SLIDING POLYCARBONATE	4379-SDI
						DRAWN BY: J.P.
						DATE: 2/21/18
						SCALE: 1" = 19.5"
						REVISION(S):

Life Line
EMERGENCY **30** Years **VEHICLES**

1 Life Line Dr.
Sumner, IA 50674

P.O. Box 299
Sumner, IA 50674

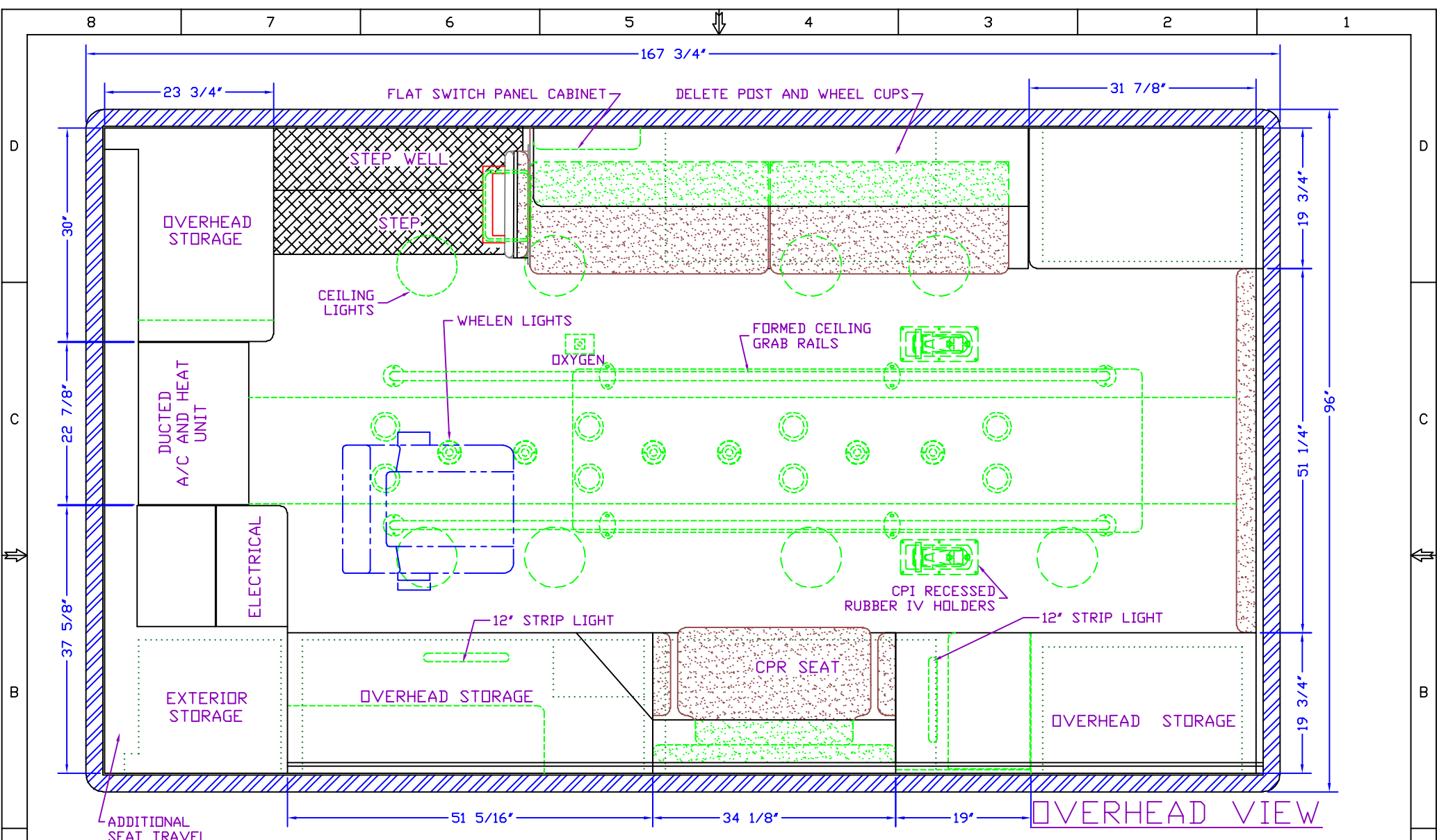
DIMENSIONS SHOWN ARE APPROXIMATE AND MAY CHANGE DURING THE CONSTRUCTION PROCESS. PRINTS ARE FOR GRAPHICAL REPRESENTATION ONLY AND NOT FOR DESIGN PURPOSES.

Tolerances:
 Third angle Projection (ANSI)
 Ang. Tol: ±1°
 Dim. Tol: ±1/16"

THIS DRAWING IS THE PROPERTY OF LIFE LINE EMERGENCY VEHICLES, WHICH CLAIMS PROPRIETARY RIGHTS IN THE MATERIAL DISCLOSED. IT IS ISSUED IN CONFIDENCE FOR ENGINEERING INFORMATION ONLY AND MAY NOT BE COPIED OR USED FOR MANUFACTURING OF ANYTHING SHOWN WITHOUT SPECIFIC WRITTEN PERMISSION OF LIFE LINE EMERGENCY VEHICLES.

167" TYPE III SUPERLINER ,72" HEADROOM
FOR GORMAN EMERGENCY VEHICLES DEMO - ELMA, NY.

FOR DRAWING APPROVAL
 APPROVED BY: _____
 TITLE: _____
 DATE: _____



CABINET	INTERIOR HEIGHT	INTERIOR WIDTH	INTERIOR DEPTH	DESCRIPTION	DOOR STYLE

DRAWING NO: 4379-SDI
DRAWN BY: J.P.
DATE: 2/21/18
SCALE: 1" = 19.5"
REVISION(S): ---

Life Line
EMERGENCY VEHICLES

1 Life Line Dr.
 Sumner, IA 50674

P.O. Box 299
 Sumner, IA 50674

DIMENSIONS SHOWN ARE APPROXIMATE AND MAY CHANGE DURING THE CONSTRUCTION PROCESS. PRINTS ARE FOR GRAPHICAL REPRESENTATION ONLY AND NOT FOR DESIGN PURPOSES.

Tolerances:
 Ang. Tol: ±1°
 Dim. Tol: ±1/16"

THIS DRAWING IS THE PROPERTY OF LIFE LINE EMERGENCY VEHICLES, WHICH CLAIMS PROPRIETARY RIGHTS IN THE MATERIAL DISCLOSED. IT IS ISSUED IN CONFIDENCE FOR ENGINEERING INFORMATION ONLY AND MAY NOT BE COPIED OR USED FOR MANUFACTURING OF ANYTHING SHOWN WITHOUT SPECIFIC WRITTEN PERMISSION OF LIFE LINE EMERGENCY VEHICLES.

FOR DRAWING APPROVAL
 APPROVED BY: _____
 TITLE: _____
 DATE: _____

167" TYPE III SUPERLINER, 72" HEADROOM
FOR GORMAN EMERGENCY VEHICLES DEMO - ELMA, NY.

MAP STORAGE

AIR HORN SWITCH

ELITE SWITCHING SYSTEM

SIREN

TOP VIEW

14"

RADIUS ALL 4 CORNERS

(2) LARGE CUP HOLDERS

20 1/4"

APPROX. 6"

11 7/8"

7 1/2"

2 1/2"



21"

6"

30 7/8"

8"

SIDE VIEW

DRAWING NO:

4379-CON

DRAWN BY: J.P.

DATE: 2/20/18

SCALE: NTS

REVISION(S):

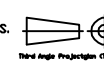
Life Line
EMERGENCY **30** Years **VEHICLES**

1 Life Line Dr.
Sumner, IA 50674

P.O. Box 299
Sumner, IA 50674

DIMENSIONS SHOWN ARE APPROXIMATE AND MAY CHANGE DURING THE CONSTRUCTION PROCESS. PRINTS ARE FOR GRAPHICAL REPRESENTATION ONLY AND NOT FOR DESIGN PURPOSES.

Tolerances:



Ang. Tol: ±1°
Dim. Tol: ±1/8"

THIS DRAWING IS THE PROPERTY OF LIFE LINE EMERGENCY VEHICLES, WHICH CLAIMS PROPRIETARY RIGHTS IN THE MATERIAL DISCLOSED. IT IS ISSUED IN CONFIDENCE FOR ENGINEERING INFORMATION ONLY AND MAY NOT BE COPIED OR USED FOR MANUFACTURING OF ANYTHING SHOWN WITHOUT SPECIFIC WRITTEN PERMISSION OF LIFE LINE EMERGENCY VEHICLES.

FOR DRAWING APPROVAL

APPROVED BY: _____
TITLE: _____
DATE: _____

167" TYPE III SUPERLINER ,72" HEADROOM
FOR GORMAN EMERGENCY VEHICLES DEMO - ELMA, NY.