

BECAUSE EMERGENCIES CAN HAPPEN ANYWHERE...



>>>> KME Works for You.™

As a privately held family company since 1946, KME™ is truly an American success story. *We've experienced six decades of steady growth because we've worked hard to maintain our founder's entrepreneurial spirit. KME is focused on an ability to rapidly respond to market demands with innovative new products and services that offer real value and build long-term partnerships.*

Unwavering Dedication to Our Customers

No company is better able to rapidly respond to customers' needs with common sense and a dedication to excellence. As a family-owned company under the leadership of John J. Kovatch III, decisions are made in the best interest of our customers, company and employees without influence from outside investors or stock market analysts. By continually reinvesting in the company with personnel training, new equipment and updated facilities, KME is best able to serve our customers today and for future generations because it's not just a business, it's our family commitment.

OUR STEADY GROWTH
OVER THE LAST SIX
DECADES EMPOWERS
US TO SERVE YOU TODAY –
AND INTO THE FUTURE.



John J. Kovatch III, KME President and CEO

Personal Attention

With 700 employees, KME has the resources to support our customers' needs. However, KME still assigns a primary point of contact for each new truck build to coordinate all communications between KME, the sales representative and the customer. There is no "handoff" through various stages of production where customers have to redefine their needs to each new person in the process. KME's project manager ensures that all customer needs and expectations are met from order to delivery, every time.

Network of Support

KME's factory locations, teamed with a nationwide network of sales and service centers, provide a full range of support for our vehicles. Our locations are fully insured and ready to provide maintenance, repairs, parts and technical support.



TYPE 1 CAPABILITY; TYPE 3 PERFORMANCE

The KME Ridgerunner is designed to bring the performance of a full pumper into the WUI zone.

KME™ designed the Ridgerunner™ as the next generation in large wildland apparatus. Now departments no longer have to choose between water and mobility. This truck brings large pumping capacity and a large water tank (up to 1000 gallons), combines it with superior pump-and-roll, puts it in a short package with a tight wheelbase, and accessorizes it with all the NFPA 1901 pumper requirements. Whether it's on the highway, off the road, in the forest, or up the driveway, the Ridgerunner is designed for the job.



Superior Pump Capability

Most manufacturers make you choose: you can have big pump capacity, but you have to stomp on the accelerator to get decent water pressure for a rolling attack. Or you can have great rolling attack, but you can't move big water. That's not the case with the Ridgerunner. KME can give you NFPA ratings of up to 1500gpm while still providing 100gpm @ 150psi @ 750 engine rpm – which means you can travel at walking speed without sacrificing stream consistency and reach. Available with either a midship or rear mount pump, this truck can provide high pressures between 400 to 600psi. Whether it's a master stream or a booster line, you will have the performance you need.



The Ultimate Toolbox

Similar trucks are notorious for having small compartments. Not the Ridgerunner. It features 29" deep compartments and 200 cubic feet of enclosed storage volume. In addition, the Ridgerunner has room for ladders – not just a short extension ladder, but a full-length extension ladder, roof ladder, and folding ladder. This allows you to get full ISO credit as a pumper.



Sure-Footed Performance

We didn't call this truck the Ridgerunner for nothing. This truck has been tested to more than 30 degrees of tilt under the expected loading. While your performance will vary with your specific configuration and equipment, you can be sure that this truck is as comfortable off-road as can be. So, regardless of the terrain or weather you have to pass through, this truck can get you there and back safely.

› “If I could only have one truck, it would look like the Ridgerunner...”

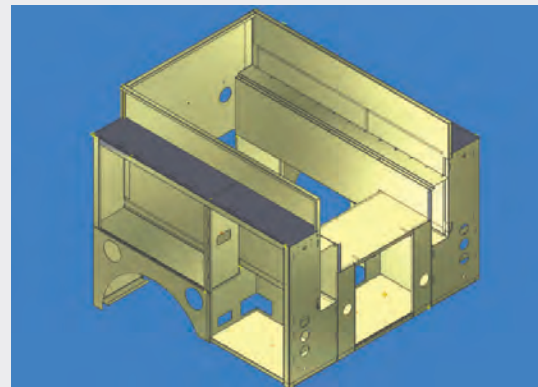
performance



>>> GREAT TRUCKS FOR THE GREAT OUTDOORS

When it comes to interface pumpers, KME has a package to meet your needs.

Interface pumpers come in many shapes and sizes. Some departments want a short, tight package with a two-stage pump. Others want larger pumps and structural ladders. Everyone wants a unit that can handle the offroad environment. That kind of truck doesn't come about by accident. And KME™ knows it's a little more complicated than just putting your standard package on a 4x4 chassis and calling it an interface...



Flexibility

We don't design *our* interface pumper; we design *your* interface pumper. KME has more flexibility and more range than any other manufacturer. Our apparatus can carry up to 750 gallons in the shortest wheelbase possible. Our engineers have found places for structural ladders and large hose loads. We have established ourselves as a leader in pump-and-roll with both diesel engine driven and PTO-driven pumps. Our options include both wet-side stainless steel tanks and dry-side polypropylene tanks. When you sit down with one of our representatives, we can show you our library of existing designs, or we can start with your specs. Either way, you can be sure that the truck you get is the one that's customized to your needs.

Built for the Load

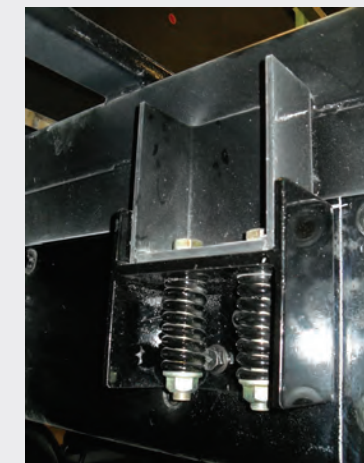
Rocks... branches... soft soils... uneven terrain... A wildland truck sees hazards that structural trucks will never see. Our bodies are designed on a heavy-duty subframe as the strongest foundation possible. From there, we use spring mounts to keep the stress at the wheels from transferring into the body. Our water tanks and tank mounts are reinforced to provide extra strength and stress isolation. In addition, we test our units using our on-site tilt table and off-center twist equipment.



Proven Performance

KME has built and delivered dozens of specialty units that meet the requirements of some of the premier wildland firefighting agencies. We have packages that meet the Forest Service's model 326/346/448 specifications, the BLM's model 667 specifications, and CALFIRE model 34 specifications. If you'd like to take advantage of that expertise, all you have to do is ask.

> KME has built hundreds of interface pumpers for some of the most demanding customers.



>>> GREAT TRUCKS IN SMALL PACKAGES *A truck doesn't have to be big to be effective.*

For those departments with tight space demands (and even tighter budgets), KME™ offers a full line of mini-pumpers and quick attacks. These units are mounted on lighter commercial chassis such as the Ford F-550. Most of these units are true multi-purpose apparatus, equally useful at a brush fire or a car wreck. And, like all KME apparatus, they can be customized according to your specific needs.



A Whole Library of Pump Options

KME mini-pumpers feature pumps as large as 1250gpm in a midship pump module. KME quick attacks can feature either a hydraulic or separate engine driven pump with capacities up to 250gpm. If desired, ultra-high-pressure pump systems up to 1400psi are also available. And the pumps can be controlled from the back of the truck, the midship position, or even inside the cab.

> Even small apparatus require the special expertise that only KME can provide.

KME Mini-Pumpers

Just as the name says, KME mini's are designed to pack the punch of a full pumper in a small unit. Available with up to 250 gallons on a crew cab (300 gallons on a two-door), the standard mini-pumper features a 9' body, **internal ladder and hard hose storage**, and a 14" deep hosebed. In addition, for the ultimate in firefighting punch, KME can supply a Compressed Air Foam System (CAFS) as an integral part of the pumping system.

KME Quick Attacks

KME quick attack units are brush trucks, plus a whole lot more. KME offers packages with either a 10' or a 12' body. Most units feature front transverse tunnels for longer equipment, such as Stokes baskets, backboards, shovels, and rakes. Depending on your equipment load, you can carry up to 400 gallons of water. Doors are available in flush or rollup. And the rear of the unit may be open, enclosed, or even have a hosebed on top.



>>> TRUE BRUSH TRUCKS

Sometimes what a department needs is a simple, well constructed unit designed exclusively for off-road brush attack. KME™ can provide just such a truck in either a flatbed or utility configuration. KME's light brush line can be configured to meet NWCG type 6 requirements, and also to USFS model 643 or BLM model 662 specifications. These units feature diesel or gasoline-driven pumps for true pump-and-roll. The body is available in aluminum, galvanized steel, or fiber composite. And all of our light brush units have the quality and support you've come to expect from the rest of our apparatus line.



WILDLAND PRODUCT BROCHURE

>>> SOMETIMES, YOU JUST CAN'T COLOR INSIDE THE LINES.

Wildland units don't always play by the rules. From crew carriers, to front mounts, to high-capacity tactical tenders, KME has worked with customers across the country to fill their need for wildland apparatus that does not fit into other categories. If you can dream it, please give KME a call. We'd love to work with you on your next project.





WWW.KOVATCH.COM

1-800-235-3928 | kme@kovatch.com

KOVATCH, KME, and "KME works for you" are trademarks and service marks of Kovatch Mobile Equipment Corp.
Copyright © 2012 Kovatch Mobile Equipment Corp.

v06012012