



Victoryliner

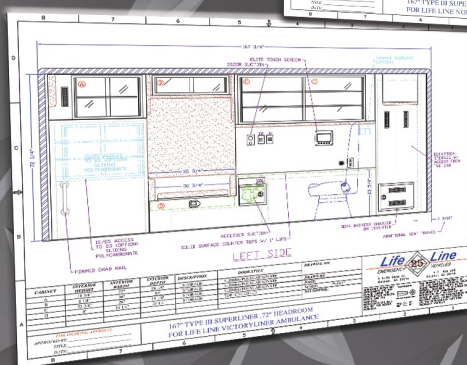
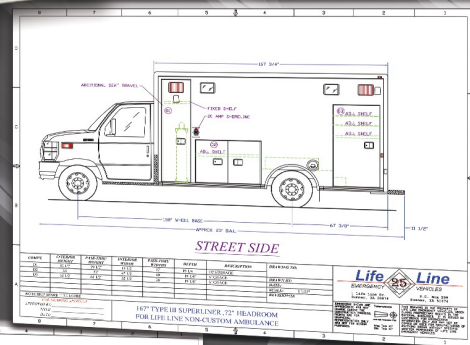
**Ready to Go
Engineered
Drawings!**

Perfection in Value

The Victoryliner, a pre-configured Superliner with a 167" Body Length. Features a Ford E450 Chassis with 158" Wheelbase. With all the standards of the Superliner, just limited to the most popular Life Line options.

With Numerous Standards, including:

- ✱ 72" Headroom
- ✱ Back-Up Camera, Utilizes Front Monitor when activated
- ✱ Momentary Disable Switch for Right Side Scene Lights
- ✱ Power Door Locks on Entry Doors
- ✱ Ducted Heat/AC
- ✱ Exterior Emergency LED Lighting
- ✱ Patient Area LED Lighting
- ✱ Exterior Compartment LED Lighting
- ✱ Stainless Steel threshold protectors
- ✱ Vortex Lined (Polyurea) Interior of Exterior Compartments



**Quicker
Process
Time!**



Life Line
EMERGENCY VEHICLES

Call or visit us online for more information
or to locate your nearest dealer!

P.O. Box 299 - Sumner, IA 50674 - www.lifelineambulance.com
563-578-3317 - 563-578-3305 (fax)

Upgrade Your Interior:

- Add Speed Load Door Feature to Cabinets
- Add Portable O2 Tank Quick Release Brackets
- Seamless Rear Facing Child/Attendant Seat
- Clock in the Rear Head Cushion
- Side Body Window
- Additional Shelves

Life Line allows you to customize your value priced "office" with a popular range of thoughtful features:

- ★ Second Rear Patient Control
- ★ 1000 Watt Inverter with a 55 Amp Battery Charger
- ★ Center Strip LED Lighting
- ★ Hidden Switch to unlock Power Door Locks
- ★ On Spot Tire Chain System
- ★ Buell Air Horns w/Compressor
- ★ Hydraulic Oxygen Tank Lift
- ★ Various Stryker Power Load Prep Packages
- ★ Compartment Door Power Locks
- ★ Ejector Type Shoreline - 20 Amp
- ★ Radio Pre-Wire Power & Ground
- ★ Opticom Pre-Wire with Park Disable Feature
- ★ Rear Bumper Tow Hooks & Rubber Dock Bumpers

Unchanged Life Line quality that delivers durability, performance and quiet comfort:

- The highest quality DuPont Elite paint to keep your transport office looking great.
- 3" Thick Labyrinth-Style doors throughout
- 3" Wide Hinges on all Compartment & Entry Doors
 - 2x3 Crash Rail System design to absorb impact & minimize damage
 - 2" thick double aluminum, interlocking, insulated Floor
 - "Surround Quiet" insulation and vapor barrier
 - Strong lightweight solid surface cabinet construction



Life Line
EMERGENCY VEHICLES

P.O. Box 299 - Sumner, IA 50674 - www.lifelineambulance.com
563-578-3317 - 563-578-3305 (fax)

The Next Generation of Ambulances will follow our Lead!